



- Security and Emergency systems
- EN 54-16 • Conference systems & Intercom systems • Microphones
- Preamplifier equipment • Control equipment • Power amplifiers
- Integrated amplifiers • Music sources • Ceiling speakers • Sound projectors • EN 54-24 speakers
- Spherical diffusers • Speaker systems • Column speakers
- Weatherproof speakers



- Variable curvature line array
- Constant curvature line array
- Column line array • Point source
- Subwoofer • Monitor • Digital loudspeaker management
- Power amplifier • Accessories






- Line array systems • Speaker systems
- Subwoofer • Monitor • Integrated sound systems • Digital loudspeaker management • Power amplifier
- Accessories



since 1963
Made in Italy

5 Ventis

ACTIVE	SPEAKER 115A 700+200W RMS 133dB SPL	112A 700+200W RMS 133dB SPL	110A 700+200W RMS 131dB SPL	108A 700+200W RMS 131dB SPL	206A 700+200W RMS 131dB SPL
PASSIVE	 115 500W RMS 130dB SPL	 112 400W RMS 132dB SPL	 110 300W RMS 127dB SPL	 108 250W RMS 126dB SPL	 206 400W RMS 127dB SPL

ACTIVE	MONITOR 115MA 700+200W RMS 133dB SPL	112MA 700+200W RMS 133dB SPL
PASSIVE	 115M 500W RMS 133dB SPL	 112M 500W RMS 126dB SPL

13 X-PRO X-SUB





ACTIVE	SPEAKER 115A 1500W RMS 130dB SPL	112A 1500W RMS 129dB SPL	110A 1500W RMS 127dB SPL	MONITOR 112MA 1500W RMS 129dB SPL
				

ACTIVE	SUB 118SA 1200W RMS 136dB SPL	115SA 1200W RMS 135dB SPL
		

19 Vertus

ACTIVE	ARRAY CLA 604A 400+100W RMS 125dB SPL	CLA 208SA 600W RMS 129dB SPL	CS1000 600+400W RMS 129dB SPL
			

27 Subline

ACTIVE	SUB 218SA 1200W RMS 143dB SPL	118SA 1200W RMS 137dB SPL	115SA 600W RMS 135dB SPL	112SA 600W RMS 135dB SPL
PASSIVE	 218S 1200W RMS 143dB SPL	 118S 1200W RMS 136dB SPL	 115S 700W RMS 135dB SPL	 112S 700W RMS 133dB SPL

31 StageMaxX

ACTIVE	MONITOR 12MA 400+100W RMS 130dB SPL
	

35 HiMaxX

ACTIVE	SPEAKER 60A 1100+250W RMS 134dB SPL	40A 1000+250W RMS 133dB SPL	SUB 100SA 1200W RMS 139dB SPL
PASSIVE	 60 700W RMS 132dB SPL	 40 500W RMS 131dB SPL	

43 **ProMaxX**


ACTIVE	SPEAKER 114A 700+200W RMS 135,5dB SPL	112A 700+200W RMS 133dB SPL	110A 700+200W RMS 131dB SPL
	114 700W RMS 132dB SPL	112 400W RMS 129dB SPL	110 300W RMS 127dB SPL



49 **JMaxX**

ACTIVE	SPEAKER 114A 700+200W RMS 132dB SPL	112A 700+200W RMS 131dB SPL	110A 700+200W RMS 129,5dB SPL
			

55 **J**

ACTIVE	SPEAKER 15A 350+100W RMS 129dB SPL	12A 350+50W RMS 128dB SPL	8A 200+50W RMS 124dB SPL	5A 80+40W RMS 117dB SPL	5T 50W RMS 114dB SPL
	15 300W RMS 127dB SPL	12 300W RMS 127dB SPL	8 160W RMS 121,5dB SPL	5 80W RMS 117dB SPL	



61 **X-LITE**

ACTIVE	SPEAKER 115A 1500W RMS 130dB SPL	112A 1500W RMS 129dB SPL	110A 1500W RMS 127dB SPL
			

67 **Amico**

ACTIVE	INTEGRATED SOUND SYSTEMS	10USB 500+2x150W RMS 130dB SPL
		

71 **AX Series**

POWER AMPLIFIERS	AX 3000	AX 2000	AX 1200	AX 800
-------------------------	----------------	----------------	----------------	---------------



72 **DMM 8008**

DIGITAL MATRIX	DMM8008
-----------------------	----------------



74 **DLM26**

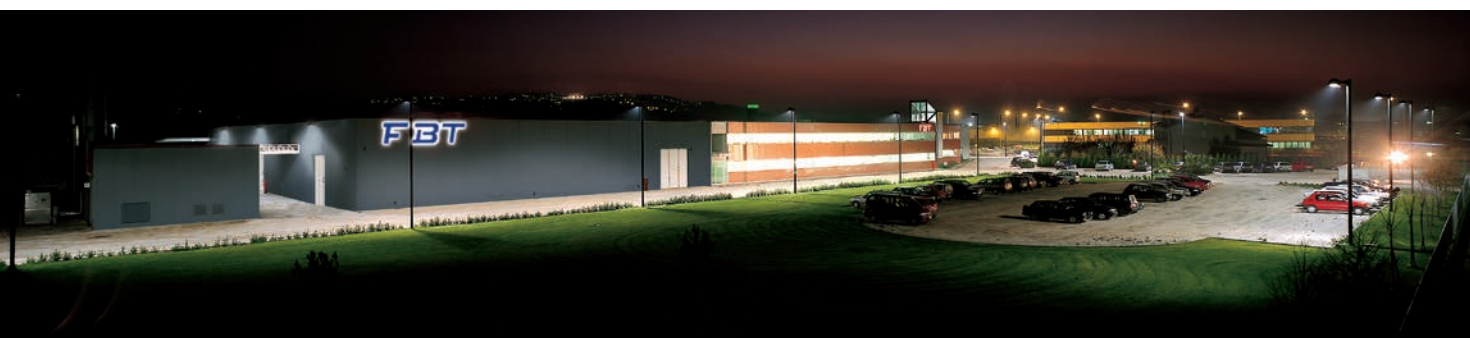
DIGITAL LOUDSPEAKER MANAGEMENT	DLM 26
---------------------------------------	---------------



76 **Accessories**

HISTORY, EXPERIENCE AND INNOVATION IN TRADITION. MADE IN ITALY.

Since 1963, FBT designs and builds sound in Recanati, a small city located in the centre of Italy, a city of Poetry, of Art, of Music, from immemorial time the soundtrack for entire generations.



IN FBT EVERY DEPARTMENT
IS A COMPANY
IN THE COMPANY
WHOSE AIM IS TO MAKE
QUALITY WITHIN
THE ENERGY OF SOUND.

A technological know-how that extends from research to planning, from electronics to design, from wood to metal, from plastics to painting. A highly innovative product and a manufacturing process determined by a strict final electronic testing.



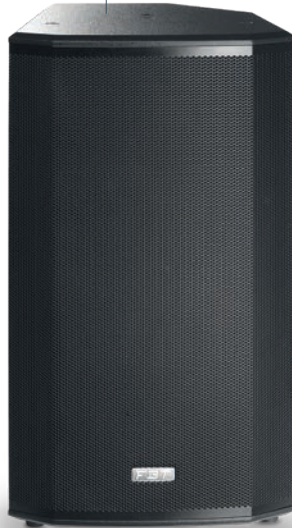
SPEAKER | 5
SYSTEM



Ventis

THE VENTIS RANGE FROM FBT COMPRISES FIVE VERSATILE LOUDSPEAKER ENCLOSURES FOR EITHER PORTABLE USE OR FIXED INSTALLATION

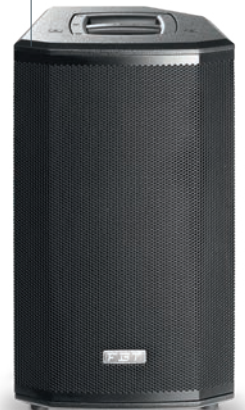
VENTIS 115A
700+200W
VENTIS 115
500W



VENTIS 112A
700+200W
VENTIS 112
400W



VENTIS 110A
700+200W
VENTIS 110
300W



Available in either passive or bi-amplified versions, each of the models - **the VENTIS 115, 112, 110, 108 and 206** - has been designed to meet the highest standards in both performance and aesthetic appeal. For the VENTIS range, quality and flexibility are the watchwords. Based on a powerful combination of B&C compression drivers and FBT's own custom, long excursion woofers, the 115, 112, 110 and 108 models are two-way, bass reflex designs housed in 15mm birch plywood. A full-grille design backed by specially treated acoustic cloth delivers the characteristic style for which FBT is known, while fully rotatable constant directivity horns ensure accurate coverage.

The five enclosures are as suitable for fixed installation as they are for use on the stage. M10 points are included as standard while an optional U-bracket can be used for wall-mounting. For use on the road, the VENTIS models include aluminum handles with rubber inserts, a 35mm polemount socket, and a 45° sloped profile for unobtrusive placement on-stage as a monitor.

Meanwhile the multi-purpose **VENTIS 206** can be deployed as a front fill, an under-balcony fill, as a main providing pristine speech intelligibility or simply as the full-range companion of a subwoofer. Constructed in 12mm birch plywood, the 206 has an integrated rear handle, an optional mounting bracket and, most importantly, an astonishing size to SPL ratio.

The new coaxial monitors in bass reflex **Ventis 112MA and Ventis 115MA** expand the active and passive range of the series. Thanks to the B&C custom transducers they are capable of a 132dB SPL. The two enclosures are built with a 15mm birch plywood and they can also be used for fixed installation and FOH thanks to 35mm pole mount socket and to the inserts for optional mounting bracket.

VENTIS 108A

700+200W

VENTIS 108

250W

VENTIS 206A

700+200W

VENTIS 206

400W

VENTIS 115MA

700+200W

VENTIS 115M

500W

VENTIS 112MA

700+200W

VENTIS 112M

500W



Designed to meet the highest standards in both performance and aesthetic appeal

Power for the active **VENTIS** models comes courtesy of a specially designed, Italian made switching mode amplifier module. Low frequencies are driven by a highly efficient 700W RMS (full bridge) Class-D topology, operating with extremely low THD. For the HF stage, a 200W RMS performance is delivered via a meticulously crafted Class-H / AB design.

Finally, DSP on-board the VENTIS enclosures is both user friendly and powerful. Located on the rear of each enclosure, a menu-driven system is navigated via a single rotary control with push-to-select functionality. A total of 6 pre-optimised settings are available (see below), plus 2 further slots for users to form their own designs, using 5 parametric equalizers per slot. Also available is a high-pass filter, a mic/line selector, low, mid and high tone settings and an optional delay of between 0 and 3.5 metres. Finally, users can exclusively choose between two limiter modes, MAX-SPL or MAX-QUALITY, to best suit their performance.

The VENTIS Presets

The FBT VENTIS range offers powerful DSP with 6 versatile presets. Crafted by expert FBT engineers, the presets offer a performance for every requirement.

ORIGINAL / LIVE The renowned, smooth FBT sound

VOCAL A special EQ setting to maximise speech intelligibility

DJ Designed to keep the energy high and your audience dancing

TOURING The reliability and the roar of the industry's most popular touring systems

LOUDNESS The ultimate preset for listening at a medium or low volume

WARM A special setting to emphasise full-bodied, low-mid frequencies.





Ventis active

2-way, bi-amplified, bass reflex design

Biamped: 700W RMS LF and 200W RMS HF power amplifiers in Class D for LF and in Class H/AB for HF

Digital Signal Processor with graphic display

15 mm (0.59") birch plywood scratch resistant enclosure and internal bracing

High efficiency switch mode power supply

Control Panel features balanced XLR/Jack input, XLR LINK OUT, 2 x Volume, RCA Stereo input, DSP display with rotative encoder and push



Ventis 115A

Processed Active Speaker
700W + 200W RMS - 133dB SPL

- 380mm (15") LF woofer with 64mm (2.5") voice coil, custom made for FBT
- 25mm (1") exit throat B&C HF compression driver with 44mm (1.7") voice coil
- Frequency response from 42Hz to 20KHz
- 80°H x 50°V Constant Directivity rotatable Horn
- 6 x M10 suspension points, wall bracket mount thread, 35 mm (1 3/8") top-hat speaker stand socket, two aluminium handles
- 45° monitor taper

Ventis 115

Passive Reinforcement Speaker
500W/8ohm - 130dB SPL



Ventis 112A

Processed Active Speaker
700W + 200W RMS - 133dB SPL

- 320mm (12") LF woofer with 64mm (2.5") voice coil, custom made for FBT
- 25mm (1") exit throat B&C HF compression driver with 36mm (1.4") voice coil
- Frequency response from 48Hz to 20 kHz
- 80°H x 50°V Constant Directivity Rotatable Horn
- 6 x M10 suspension points, optional wall bracket mount thread, 35mm (1 3/8") top-hat speaker stand socket, two aluminium handles
- 45° monitor taper

Ventis 112

Passive Reinforcement Speaker
400W/8ohm RMS - 129dB SPL

Ventis passive

Built-in passive crossover with soft-trip protection for the LF woofer and HF driver

Speakon NL-4 IN and LINK OUT connectors





Ventis 110A

Processed Active Speaker
700W + 200W RMS - 131dB SPL

- 250mm (10") LF woofer with 50mm (2") voice coil, custom made for FBT
- 25mm (1") exit throat B&C HF compression driver with 36mm (1.4") voice coil
- Frequency response from **58Hz to 20 kHz**
- **80°H x 50°V** Constant Directivity Rotatable Horn
- 6 x M10 suspension points, optional wall bracket mount thread, 35mm (1 3/8") top-hat
- Speaker stand socket, one aluminium handle
- 45° monitor taper

Ventis 110

Sound Reinforcement Speaker
300W/8ohm RMS - 127dB SPL



Ventis 108A

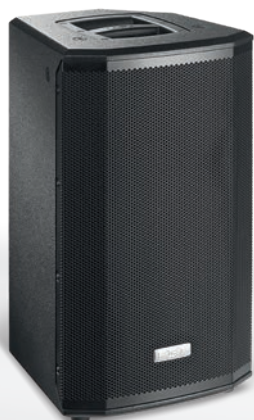
Processed Active Speaker
700W + 200W RMS - 131dB SPL

- 2-way bi-amplified, bass-reflex design
- 200mm (8") LF woofer with 50mm (2") voice coil, custom made for FBT
- 25mm (1") exit throat B&C HF compression driver with 36mm (1.4") voice coil
- Frequency response from **65Hz to 20 kHz**
- **80°H x 50°V** Constant Directivity Rotatable Horn
- Optional wall bracket mount thread, 35mm (1 3/8") top-hat
- One integrated pocket handle

Ventis 108

Passive Reinforcement Speaker
250W/8ohm RMS
126dB SPL

- 4 x M5 threaded rigging points and optional mounting hardware





Ventis 206A

Processed Active Speaker
700W + 200W RMS - 131dB SPL

- **2x165mm (6.5") LF woofer** with **38mm (1.5")** voice coil, custom made for FBT
- **25mm (1") exit throat** B&C HF compression driver with **36mm (1.4")** voice coil
- Frequency response from **70Hz to 20 kHz**
- **70°H x 50°V** Constant Directivity Rotatable Horn
- Optional wall bracket mount thread, 35mm (1 3/8") top-hat
- One integrated handle
- 12mm (0.47") birch plywood scratch resistant enclosure and internal bracing

Ventis 206

Sound Reinforcement Speaker
400W/8ohm RMS - 127dB SPL

Ventis active

2-way, bi-amplified, bass reflex design

Biamped: 700W RMS LF and 200W RMS HF power amplifiers in Class D for LF and in Class H/AB for HF

Digital Signal Processor with graphic display

15 mm (0.59") birch plywood scratch resistant enclosure and internal bracing

High efficiency switch mode power supply

Control Panel features balanced XLR/Jack input, XLR LINK OUT, 2 x Volume, RCA Stereo input, DSP display with rotative encoder and push

Ventis passive

Built-in passive crossover with soft-trip protection for the LF woofer and HF driver

Speakon NL-4 IN and LINK OUT connectors





Ventis 115MA

Processed Active Monitor
700W + 200W RMS - 132dB SPL

- 2-way bi-amplified, bass-reflex design
- **380 mm (15")** coaxial custom woofer with **64 mm (2.5")** voice coil, **25mm (1")** exit throat B&C with **44mm (1.7")** voice coil
- Frequency response from **50Hz to 20kHz**
- DSP with 6 factory presets (ORIG, HI-CUT/ DRUM-FILL, LO-CUT/TWIN, FOH, VOCAL, TOURING)
- **90° conical dispersion**
- **35 mm (1.38")** stand socket, two integrated handles and optional wall mount bracket



Ventis 112MA

Processed Active Monitor
700W + 200W RMS - 132dB SPL

- 2-way bi-amplified, bass-reflex design
- **320 mm (12")** coaxial custom woofer with **64 mm (2.5")** voice coil, **25mm (1")** exit throat B&C with **44mm (1.7")** voice coil
- Frequency response from **55Hz to 20kHz**
- DSP with 6 factory presets (ORIG, HI-CUT/ DRUM-FILL, LO-CUT/TWIN, FOH, VOCAL, TOURING)
- **90° conical dispersion**
- **35 mm (1.38")** stand socket, two integrated handles and optional wall mount bracket

Ventis 115M

Passive Reinforcement Monitor
500W/8ohm RMS - 130dB SPL

Ventis 112M

Passive Reinforcement Monitor
500W/8ohm RMS - 129dB SPL





Model		Ventis 115A	Ventis 112A	Ventis 110A	Ventis 108A	Ventis 206A	Ventis 115MA	Ventis 112MA
Configuration	way	2	2	2	2	2	2	2
Built-in amplifier max. rms LF/HF	W	700/200	700/200	700/200	700/200	700/200	700/200	700/200
Built-in amplifier max. peak LF/HF	W	1400/400	1400/400	1400/400	1400/400	1400/400	1400/400	1400/400
Frequency response	@-6dB	42Hz - 20KHz	48Hz - 20KHz	58Hz - 20KHz	65Hz - 20KHz	70Hz - 20KHz	50Hz - 20KHz	55Hz - 20KHz
Low frequency woofer	inch	15 - 2.5 coil	12 - 2.5 coil	10 - 2 coil	8 - 2 coil	2x6.5 - 1.5 coil	15 - 2.5 coil	12 - 2.5 coil
High frequency driver	inch	1 - 1.7 coil	1 - 1.4 coil	1 - 1.4 coil	1 - 1.4 coil	1 - 1.4 coil	1 - 1.7 coil	1 - 1.7 coil
Maximum SPL cont/peak	dB	127 / 133	126 / 133	124 / 131	123 / 131	124 / 131	127 / 133	126 / 133
Dispersion	H x V	80° x 50° rotatable	80° x 50° rotatable	80° x 50° rotatable	80° x 50° rotatable	70° x 50° rotatable	90°	90°
Input impedance	kOhm	22	22	22	22	22	22	22
AC Power requirements	VA	640	640	640	640	640	640	640
Input connectors		XLR with loop, RCA ST	XLR with loop, RCA ST	XLR with loop, RCA ST	XLR with loop, RCA ST	XLR with loop, RCA ST	XLR with loop, RCA ST	XLR with loop, RCA ST
Power cord	m/ft	5/16.4	5/16.4	5/16.4	5/16.4	5/16.4	5/16.4	5/16.4
AC Power connector		Neutrik POWERCON TRUE1	Neutrik POWERCON TRUE1	Neutrik POWERCON TRUE1	Neutrik POWERCON TRUE1	Neutrik POWERCON TRUE1	Neutrik POWERCON TRUE1	Neutrik POWERCON TRUE1
Net dimensions (WxHxD)	mm inch	427x765x420 16.81x30.11x16.53	387x665x380 12.23x26.18x14.96	329x575x325 12.95x22.63x12.79	274X485X270 10.78X19.09X10.62	190x560x260 7.48x22.04x10.23	632x354x516 24.9x11.9x20.3	563x311x452 22.2x12.2x17.8
Net weight	kg/lb	25/55.11	20.6/45.41	15.6/34.39	13.3/29.3	12/26.45	21.3/46.9	17.5/38.6
Transport dimensions (WxHxD)	mm inch	600x865x520 23.62x34.05x20.47	500x765x470 19.68x30.11x18.50	420x675x400 16.53x26.57x15.74	395X620X345 15.55X24.40X13.58	290x660x360 11.41x25.98x14.17	732x454x616 28.8x17.9x24.2	663x411x552 26.1x16.2x21.7
Transport weight	kg/lb	29/63.93	23.1/50.92	18.1/39.90	15.3/33.7	14.3/31.52	25.8/56.9	22/48.5

Model		Ventis 115	Ventis 112	Ventis 110	Ventis 108	Ventis 206	Ventis 115M	Ventis 112M
Configuration	way	2	2	2	2	2	2	2
Recommended amplifier	W rms	500	400	300	250	400	500	400
Long term power *	W	250	200	150	125	200	250	200
Short term power (IEC 268-5) **	W	1000	800	600	500	800	1000	800
Nominal impedance	Ohm	8	8	8	8	8	8	8
Frequency response	@-6dB	50Hz - 18KHz	55Hz - 18KHz	60Hz - 18KHz	70Hz - 18KHz	75Hz - 20KHz	55Hz - 18KHz	60Hz - 18KHz
Low frequency woofer	inch	15 - 2.5 coil	12 - 2.5 coil	10 - 2 coil	8 - 2 coil	2x6.5 - 1.5 coil	15 - 2.5 coil	12 - 2.5 coil
High frequency driver	inch	1 - 1.7 coil	1 - 1.4 coil	1 - 1.4 coil	1 - 1.4 coil	1 - 1.4 coil	1 - 1.7 coil	1 - 1.7 coil
Sensitivity (@1W/1m)	dB	99	98	97	95	97	99	98
Maximum SPL cont/peak	dB	126 / 130	125 / 129	122 / 127	120 / 126	123 / 127	126 / 130	125 / 129
Dispersion	H x V	80° x 50° rotatable	80° x 50° rotatable	80° x 50° rotatable	80° x 50° rotatable	70° x 50° rotatable	90°	90°
Crossover frequency	kHz	1.4	1.6	1.8	1.8	2	1.4	1.6
Recommended HP filter		40Hz - 24db/oct	45Hz - 24db/oct	50Hz - 24db/oct	50Hz - 12-24db/oct	60Hz - 24db/oct	50Hz - 12-24db/oct	50Hz - 12-24db/oct
Recommended external DSP		FBT DLM26	FBT DLM26	FBT DLM26	FBT DLM26	FBT DLM26	FBT DLM26	FBT DLM26
Input connectors		2 x SPEAKON	2 x SPEAKON	2 x SPEAKON	2 x SPEAKON	2 x SPEAKON	2 x SPEAKON	2 x SPEAKON
Net dimensions (WxHxD)	mm inch	427x765x420 16.81x30.11x16.53	387x665x380 12.23x26.18x14.96	329x575x325 12.95x22.63x12.79	274X485X270 10.78X19.09X10.62	190x560x260 7.48x22.04x10.23	632x354x516 24.9x11.9x20.3	563x311x452 22.2x12.2x17.8
Net weight	kg/lb	24.5/54.01	20.1/44.31	15.1/33.28	12.3/27.1	11.8/26.01	20.3/44.7	16.5/36.4
Transport dimensions (WxHxD)	mm inch	600x865x520 23.62x34.05x20.47	500x765x470 19.68x30.11x18.50	420x675x400 16.53x26.57x15.74	395x620x375 15.5x24.4x14.7	290x660x360 11.41x25.98x14.17	732x454x616 28.8x17.9x24.2	663x411x552 26.1x16.2x21.7
Transport weight	kg/lb	28.5/2.83	22.6/49.82	17.6/38.80	14.3/31.5	13.8/30.42	24.8/54.7	21/46.3

Accessories page 76	Ventis 115	Ventis 112	Ventis 110	Ventis 108A	Ventis 108	Ventis 206	Ventis 115M	Ventis 112M
Nylon cover	VN-C 115 40720	VN-C 112 40721	VN-C 110 40722	VN-C 108A 41204	VN-C 108 41205	VN-C 206 40723	VN-C 115M 41207	VN-C 112M 41206
Wall metal bracket to mount in horizontal position	VN-U 115 40724	VN-U 112 40725	VN-U 110 40726	VN-U 108 41220	VN-U 108 41220	VN-U 206 40727		
Directional wall mount bracket						AC-W 568/W 41207 37330 Bianco		

SPEAKER | 13
SYSTEM



X-PRO
X-SUB



X-PRO AND X-SUB AIM FOR SUCCESS!

The **X-PRO** series has been renewed with the redesign of all the electronics, increasing power and adding important innovations, such as a 3-channel mixer and the use of **BLUETOOTH 5.0** for streaming audio from smartphones and tablets, in addition to the use of more efficient speakers capable of generating a higher sound pressure.

The “power unit” is also new featuring a switching power supply with automatic voltage switch in the 100-240Vac range; two high-efficiency Class D channels, a three-channel mixer with two micro/line inputs, a stereo input and channel for wireless audio streaming with BLUETOOTH 5.0 protocol (compatible with previous versions) that allows the simultaneous recognition of two speakers with the possibility of remote volume control.

The introduction of fan with smart control of the number of revolutions allows amplifier operating temperatures to be kept low, ensuring noise-free operation.

DESIGNED AS THE PERFECT PARTNER FOR THE **X-LITE** AND **X-PRO** SERIES, **FBT** INTRODUCES THE NEW **X-SUB** POWERED SUBWOOFERS.

X-SUB 115SA equipped with a 15\” (380mm) high excursion woofer and a 1200W RMS internal amplifier. It has a digital signal processor with 4 presets, allowing extensive customisation of low frequencies up to mid-high levels.

The robust 15mm (0.59 inch) birch plywood box is specially designed to satisfy all installation requirements. **X-SUB 115SA** is equipped with an M20 stand support for mounting a satellite, and two aluminium handles, and offers the option of installing four 100mm wheels (3.93 inch).

X-SUB 118SA Loaded with a single 18\” heavy duty woofer, the **X-SUB 118SA** is controlled by a 1200W Class D amplifier with DSP at 4 preset allowing perfect tailoring of the extended low frequency to the mid-high. The rugged plywood enclosure is built to withstand touring conditions, yet crafted with italian style to suit the most elegant fixed installation. Finally, the M20 thread allows for pole mounting on a 3-way system design **X-SUB 115SA**



Handles, **M10 rigging points** for suspended installation, 35mm stand socket and 35° or 45° monitor taper, all included to make the speaker adaptable to any application

X-PRO 115A
1200W + 300W

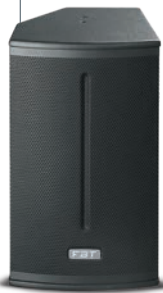
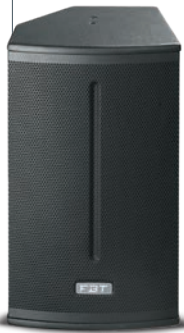
X-PRO 112A
1200W + 300W

X-PRO 110A
1200W + 300W

X-PRO 112MA
1200W + 300W

X-SUB 118SA
1200W

X-SUB 115SA
1200W



X-PRO | X-SUB
Speaker Systems

X-PRO and X-SUB The professional's choice

X-PRO Series common features

- Plywood cabinet with anti-scratch coating and an internal ply reinforcement.
- High-efficiency **custom FBT** speakers with high linear excursion capacity.
- Compression drivers with 25mm aperture and 35mm coil.
- **1200W LF and 300W HF** high dynamic **Class D** amplifier.
- Universal switching power supply 100-240Vac.
- **Bluetooth 5.0**
- **DSP processor** with **4 equalization presets**.
- Advanced filtering algorithms, dynamic equalization of low frequencies, energy control that change depending on the preset chosen.
- 3-channel mixer: one dedicated **BLUETOOTH 5.0** channel, two independent micro/line channels with separate volume and one with stereo jack input, balanced XLR MIX output or CH1 LINK.
- Built-in handles, **M10** anchor points for suspended installation, stand support, **35°** and **45°** diffuser monitor profile.



Monitor 35°



X-PRO 115A

Processed Active Speaker
1200W + 300W RMS

- 2 way bi-amplified bass reflex
- FBT **custom 380mm (15")** LF woofer with **64mm (2.5")** voice coil
- FBT **25mm (1") throat 135mm (1.4")** voice coil HF compression driver
- **42Hz 20KHz** frequency response
- **80 °H x 50 °V** totatable constant directivity horn
- **35° - 45°** monitor taper



X-PRO 112A

Processed Active Speaker
1200W + 300W RMS

- 2 way bi-amplified bass reflex
- FBT **custom 320mm (12")** LF woofer with **64mm (2,5")** voice coil
- FBT **25mm (1") throat 135mm (1.4")** voice coil HF compression driver
- **50Hz 20KHz** frequency response
- **80 °H x 50 °V** totatable constant directivity horn
- **35°** monitor taper



X-PRO 110A

Processed Active Speaker
1200W + 300W RMS

- 2 way bi-amplified bass reflex
- FBT **custom 250mm (10")** LF woofer with **64mm (2,5")** voice coil
- FBT **25mm (1") throat 135mm (1.4")** voice coil HF compression driver
- **58Hz 20KHz** frequency response
- **80 °H x 50 °V** rotatable constant directivity horn
- **35°** monitor taper





X-PRO 112MA

Processed Active Reinforcement Monitor

- **1200W LF / 300W HF Class D** amplifier
- FBT **custom 320mm (12") LF** woofer with **64mm (2,5")** voice coil
- FBT **25mm (1") throat 135mm (1.4")** voice coil HF compression drive
- **54Hz - 20KHz** frequency response
- Switching power supply 100/240V
- Processore DSP con 4 preset
- Bluetooth 5.0
- Three-channel mixer
- Box in plywood with anti-scratch treatment
- 1.38" speaker stand socket and two FBT design
- Aluminum handles, wall bracket mount thread (optional).



X-SUB 118SA

Processed Active Subwoofer 1200W RMS

- Compact band-pass design subwoofer with high SPL and punch
- 460mm (18") high excursion woofer with 75mm (3") voice coil
- **38Hz to 120Hz** frequency response
- **1200W RMS class D** power amplifier with switch mode supply
- DSP processor with **4 presets**, 2 equalization with 2 LPF crossover settings
- Control panel with stereo combo XLR/Jack in-out, stereo XLR HP filter out, volume, EQ preset, phase reversal, switch 0°-180°, status led indicators
- **18mm** plywood cabinet with scratch & scuff resistant paint finish
- **M20** top mount speaker stand socket, 2 FBT design aluminium handles, optional 100mm (3.93 inch) transport wheels
- Ideal to reinforce and extend the **X-PRO / X-LITE** series low range



X-SUB 115SA

Processed Active Subwoofer 1200W RMS

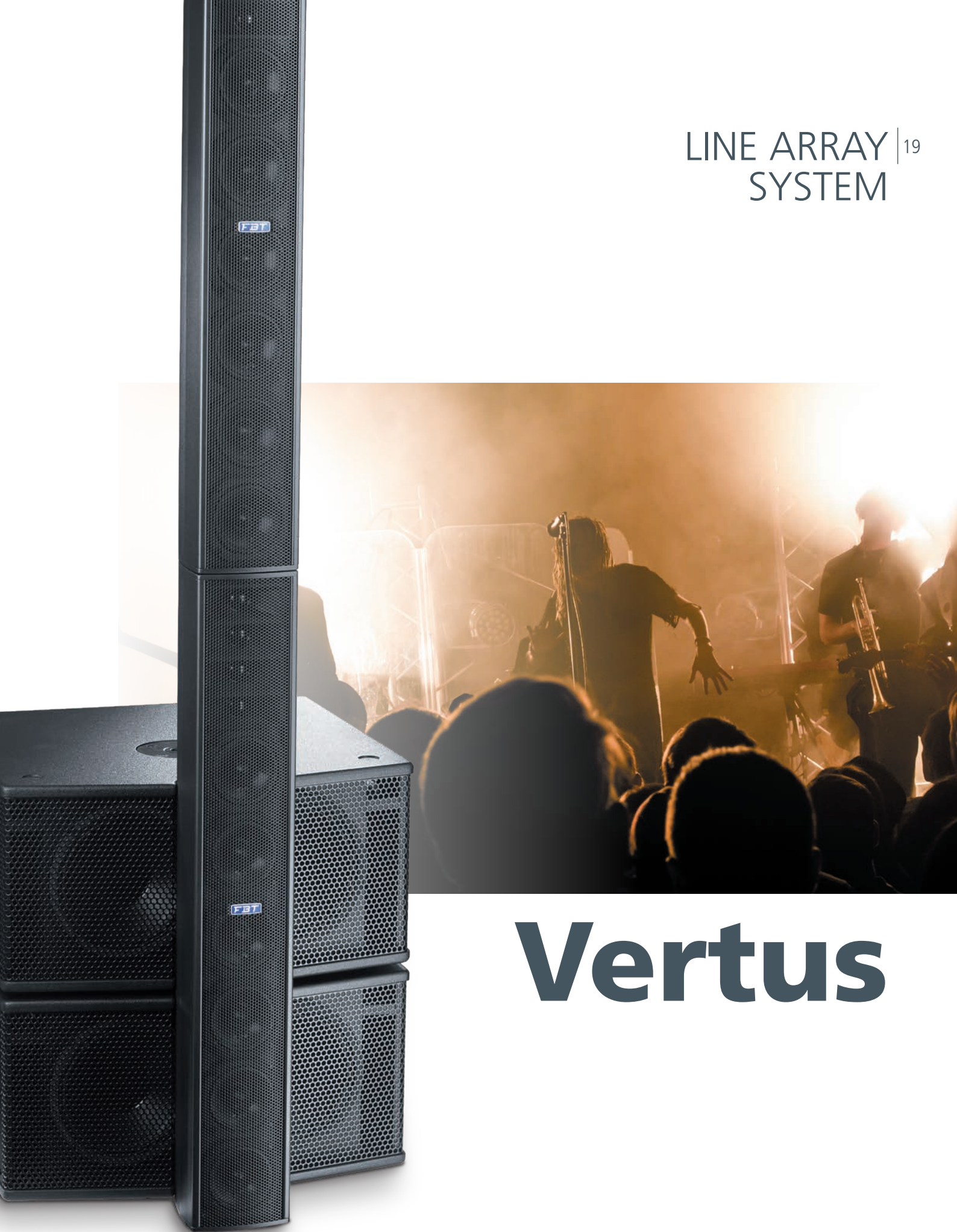
- Compact and featuring **great SPL** and "punch"
- **380mm (15") woofer with 75mm (3") coil**
- **42Hz to 120Hz** frequency response
- **1200W RMS class D** amplifier with switching power supply
- DSP processor with **4 presets** (2 responses with 2 different cut-off frequencies)
- Control panel with XLR input and stereo link, XLR HP filt. out, volume, switch preset and phase, LED status indicator
- **15mm** (0.59inch) birch plywood box with scratch-resistant paint finish
- **M20** stand support, 2 aluminium handles, optional 100mm (3.93 inch) transport wheels
- Ideal to reinforce and extend the **X-PRO / X-LITE** series low range





Model		X-PRO 115A	X-PRO 112A	X-PRO 110A	X-PRO 112MA	X-SUB 185A	X-SUB 155A
Configuration	way	2	2	2	2	1	1
Built-in amplifier max LF/HF	W	1200/300	1200/300	1200/300	1200/300	1200	1200
Frequency response	@-6dB	42Hz - 20KHz	50Hz - 20KHz	58Hz - 20KHz	54Hz - 20KHz	38Hz - 120Hz	42Hz - 120Hz
Low frequency woofer	inch	15 - 2.5 coil	12 - 2.5 coil	10 - 2.5 coil	12 - 2.5 coil	18 - 3 coil	15 - 3 coil
High frequency driver	inch	1 - 1.4 coil	1 - 1.4 coil	1 - 1.4 coil	1 - 1.4 coil	-	-
Maximum SPL peak	dB	125 / 130	124 / 129	123 / 127	124 / 129	136 half space	135 half space
Dispersion	H x V	80° x 50° rotatable	80° x 50° rotatable	80° x 50° rotatable	80°	omni	omni
Input impedance	kOhm	22	22	22	22	22	22
AC Power requirements	VA	500	500	500	500	600	600
Input connectors		XLR IN / OUT, Jack ST	XLR IN / OUT, Jack ST	XLR IN / OUT, Jack ST	XLR IN / OUT, Jack ST	-	-
Power cord	mm /inch	5 / 16.4	5 / 16.4	5 / 16.4	5 / 16.4	5 / 16.4	5 / 16.4
Net dimensions (WxHxD)	mm inch	439x735.5x440 17.2x28.93x17.32	369x640x370 14.52x25.19x14.56	314x550x315 12.36x21.65x12.40	550x320x467 21.65x12.59x18.38	510x655x650 20.07x26.22x25.59	455x586x570 17.9x23.1x22.4
Net weight	kg / lb	22 / 48.50	18 / 39.68	13.5 / 29.76	16 / 32.57	34 / 74.95	30 / 66.1
Accessories page 76		X-PRO 115A	X-PRO 112A	X-PRO 110A	X-PRO 112MA	X-SUB 118SA with wheels	X-SUB 115SA with wheels
Nylon cover		XP-C 15 39486	XP-C 12 39487	XP-C 10 39488	XP-C 112M 44161	XS-C 118S 44159	XS-C 115SA 41233
U bracket horizontal wall mount		XP-UH 15 38894	XP-UH 12 38893	XP-UH 10 38892	XP-UH 112M 44158		XS-CH 115SA 41234
Wheels kit						KW-X SUB 38899	

LINE ARRAY | 19
SYSTEM



Vertus

PROFESSIONAL LINE ARRAY

VERTUS CLA was created with the thought of **integrating professional line array technology in an extremely compact and elegant speaker column.**

Compared to the traditional two-way speakers, the **sound is distributed much more evenly throughout the audience**, both in outdoor and in indoor environments acoustically difficult or reverberating as well. The CLA cylindrical wave front boasts the pleasant effect of present and precise forwardly projected sound. Even acoustic feedback towards microphones is reduced.

VERTUS CLA is a light and compact modular line array system created for both live and fixed installations, comprised by two products:

- **CLA 604A:** bi-amp two-way active column speakers **400 + 100W RMS**
- **CLA 208SA:** active subwoofer **600W RMS**

CLA604A is an extruded aluminum column speaker fitted with **6 x 4" custom woofers and 4 x 1" dome tweeters**, each coupled to a wave guide. The internal **Class D amplification**, 400W for woofers and 100W for tweeters with switch mode power supply and **DSP processor with 4 equalization presets** provide unexpected dynamics in a system of these dimensions.

The rapid latching system with pins allows for the expansion of the system, doubling-up CLA604A modules to form a unified column with an absolute and coherent source integration and increase of SPL and low-frequency directivity control.

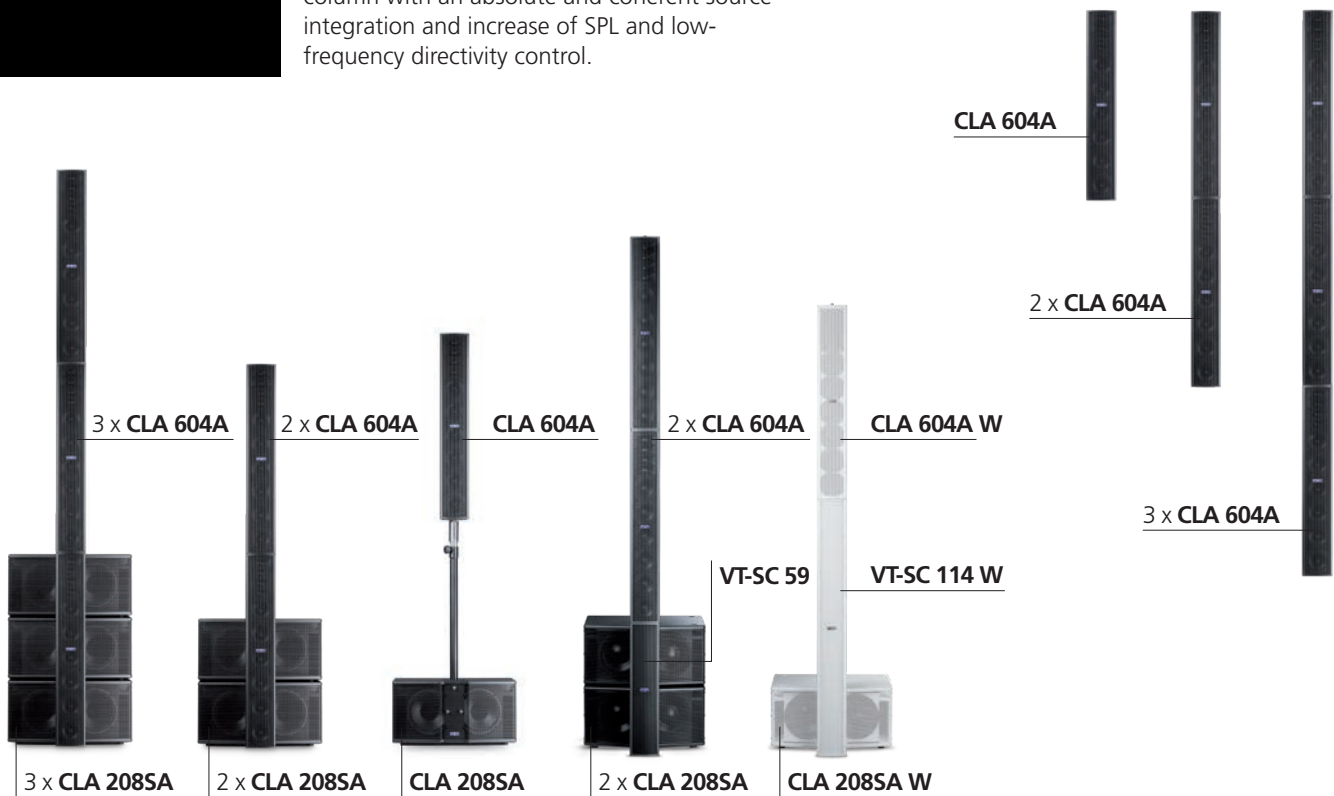
CLA 208SA is a 2 x 8" active subwoofer in bass-reflex design and birch ply enclosure. The internal Class D amplifier delivers 600W and is matched with a switch mode power supply and a DSP processor with filtering functions, equalization and speaker protection. **Created with the idea of extending the CLA608A's low frequency performance in live applications**, the CLA208SA serves as the base support for the CLA604A column speaker which can either be frontally mounted to the sub, as well as fixed upon the optional stand through the M20 socket on the upside of the sub. The CLA208SA subwoofers are modular as well, and they can be stacked to enlarge and increase the maximum SPL.



Vertus CLA 604A
400+100W



Vertus CLA 208SA
600W





CLA system features:

- **High-level sound quality** from 50Hz to 20kHz expressly developed for live performance
- **Long distance sound projection** and better SPL distribution towards the audience
- **Great and dynamic power performance** thanks to tri-amplification system
- **Lightweight and easy to carry**
- **Design and elegance** for an easy integration even in the most demanding installations
- **Very compact dimensions** enable the listener to concentrate on sound and not on speakers!
- **High horizontal dispersion**

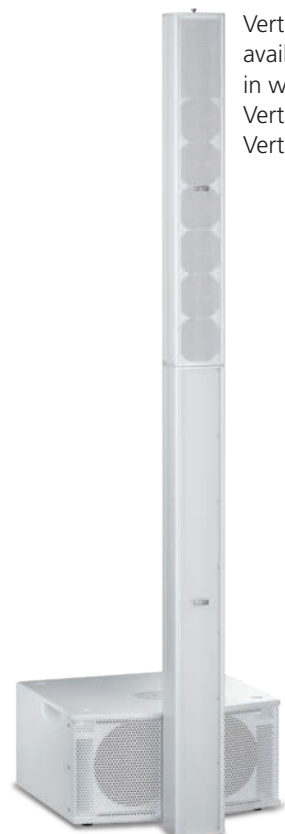
The internal XLR signal link system and Neutrik POWERCON power supply on both the sub and the satellite, **allows for hiding wires and cables from open sight, preserving the system's clean aesthetics.**

VERTUS CLA is a true professional line array system that can satisfy the musician looking for a compact PA solution, easily to carry, modular, ready to use in just minutes with no-compromise quality. It is **capable of being integrated into any environment or installation requiring high-quality sound and controlled directional characteristics.**

Vertus
Line Array Systems

The technology and quality of a professional line array in a compact column

21



Vertus is also available in white colour:
Vertus 604A W
Vertus 208SA W

LOOP AC LOOP OUT
220-230V~
50/60Hz 18A max



DO NOT EXCEED RATED
MAX CURRENT DRAW
FROM AC LOOP
OUTPUT CONNECTOR

ON PEAK PRT/LMT

SOURCES HP FILTER
LINE MIC OFF ON

dB 0 1 2 3 4
VOLUME PRESET

EQUALIZATION PRESET CHART

- 1 - 1SAT Constant Vertical Dispersion
- 2 - 1SAT MAX. SPL
- 3 - 2SAT
- 4 - 3SAT

SCOT
CLA 604A



Vertus CLA 604A

Column Active Line Array
400W + 100W RMS - 125dB SPL

- 2-way bi-amplified Line Array Column
- **6 x 100 mm (4")** custom woofer with 25 mm (1") voice coil
- **4 x 25 mm (1")** neodymium dome tweeter on waveguide
- 130Hz to 20KHz frequency response
- **Class D 400W RMS** amplifier for **LF** and **100W RMS** for **HF** with switch mode power supply
- **DSP processor** with 4 available equalization presets
- Control panel with volume, presets, HP filter, Mic-Line, status LED
- XLR input and Neutrik POWERCON supply input at the lower part of the column; XLR link and Neutrik POWERCON loop output at the higher part, in order to hide each connection cable
- **100°H x 20°V dispersion**
- **Extruded-aluminum power coated cabinets.** Superior latching system enables the extension of the length of the line array by adding CLA604A modules for increased modularity of the system
- Possibility to angle the columns of +/- 30° on a horizontal plane
- Ideal for both live applications, assisted by the CLA 208SA active subwoofer, as well as for fixed installation
- **Easily expandable for a total power of 6600W** (stereo system composed of 3 x CLA604A and 3 x CLA208SA)
- Very light and easy to carry





Vertus CLA 208SA

Processed Active Subwoofer
600W RMS - 129dB SPL

- Active subwoofer in bass-reflex design
- **2 x 200 mm (8")** custom, **high-excursion woofer** with 50 mm (2") voice coil
- 50Hz to 180Hz frequency response
- **Class D 600W RMS** amplifier with switch mode power supply
- **DSP processor** with 4 available presets
- Control panel with combo XLR/Jack stereo input and link, XLR Hi-pass out stereo, volume, presets, 0°-180° phase switch, status LED
- **Neutrik POWERCON** input and link
- **15 mm birch plywood enclosure** with anti-scratch paint finish, stackable
- M20 stand adapter, 2 integrated handles, front hardware to sustain CLA604A modules
- Suitable for low frequency extension and reinforcement of the CLA604A array, especially for live performance



VERTUS CS1000

Created as a no-compromise choice for both live performers and installers, the VERTUS CS1000 compact line array combines maximum performance with a modular, scalable approach

Its lightweight but sturdy construction blended with FBT's distinctive engineering and elegance has delivered a system that can be deployed on stage within minutes, or discreetly integrated into the most delicate of decors to provide high-quality sound and controlled directivity.

A bi-amplified design, the system comprises a long excursion 12" bass reflex subwoofer and a passive mounted satellite, linked via a Neutrik SPEAKON connector and equipped with six full-range neodymium 3" speakers. Onboard the subwoofer is a Class-D, two channel amplifier, complete with switch-mode power supply, delivering 600W RMS to the subwoofer and 400W RMS to the satellite, both of which are housed in birch plywood enclosures.

For ease of use, a storage compartment is provided within the subwoofer enclosure to securely house both the satellite speaker and its supplied mounting pole for storage and transport. A dedicated locking system holds all of the equipment in place.

As with all FBT products, graceful but effective engineering is at the heart of the VERTUS CS1000, as exemplified by the mounting pole. Comprised of three sections, the pole allows users to alter the height of

Vertus CS 1000
600+400W



the satellite to suit their requirements, while a custom joint provides continuous vertical adjustment to ensure precise coverage in every venue. No listener is left untouched by the VERTUS CS1000 - the slim proportions of the satellite facilitate a wide horizontal dispersion of 110°, while the precision placement of the six 3" drivers to form a J-array creates a vertical dispersion of 30° (+10° / -20°).

Need more power? The VERTUS CS1000 takes a modular approach in that two systems can be used in a dual configuration to form a totally coherent and much more powerful solution. By stacking the two subwoofers and locking the two satellites together end-to-end (via optional hardware), the maximum SPL of the overall system is raised by 6dB. Coverage is also extended - although the horizontal dispersion remains consistent, vertical dispersion increases to 40° (+20° / -20°)

Other features ensure ease of use and a rugged build quality. The subwoofer is equipped with aluminum handles complete with a rubber insert to guarantee a comfortable grip - transporting the entire system, including the subwoofer, satellite, mounting pole, joint and all cables, is both convenient and comfortable. The fanless amplifier module is protected by diecast aluminum, while onboard DSP offers a choice of eight dedicated presets, each one shaped by FBT's long experience in creating proprietary algorithms to suit every requirement.

Finally, the VERTUS CS1000 is compact in dimension but big on sound. The volume of the satellite can be adjusted in accordance with the subwoofer in 8 steps between -4.5 / +5dB range, while a selectable high-pass filter ensures optimum reproduction. And as your requirements grow, the VERTUS CS1000 compact line array will grow with you - simply combine four systems in a two per-side stereo configuration to achieve a remarkable 8.000W peak.





Vertus CS1000

**Compact Two-Way
Integrated Array System
600W + 400W RMS - 129dB SPL**

- 2-way speaker system
- 6 x full-range, 3" (70mm) neodymium high efficiency custom woofers with 0.75" (20mm) voice coils
- Subwoofer with a custom 12" (320mm) long excursion speaker with a 2.5" (64mm) voice coil
- Frequency response of 40Hz to 20KHz
- Onboard Class-D, switch-mode amplifier delivering 600Wrms + 400Wrms for LF and HF respectively
- Built-in DSP with eight presets to suit every application
- Variable satellite volume between -4.5 / + 5 dB in 8 steps
- Control Panel with master volume, presets, variable satellite volume, LED status, mic/line
- Input and link via XLR and Neutrik SPEAKON for satellite connection
- **Dispersion 110° (H) x 30° (V)**



- **Modular design allowing two systems to be configured as one single solution via optional accessories**
- **Bass reflex stackable subwoofer** in a birch plywood enclosure with diecast aluminum handle and rubber inserts, plus M20 support and a custom pole-mount solution facilitating adjustable height and vertical aiming
- **The satellite and pole are fully integrated into the subwoofer cabinet, where a push button system locks the satellite in place for transportation**
- The satellite is equipped with a coupling system for accessories which allow the extension of the length of the line array, positioning one atop the other. Alternatively, the same system allows the satellite to be permanently wall-mounted
- **Ideal for both live applications and fixed installations**
- **Easily expandable to a total power of 8.000W peak** (via a stereo system consisting of 4 x VERTUS CS1000, positioned two per side)



Vertus
Line Array Systems

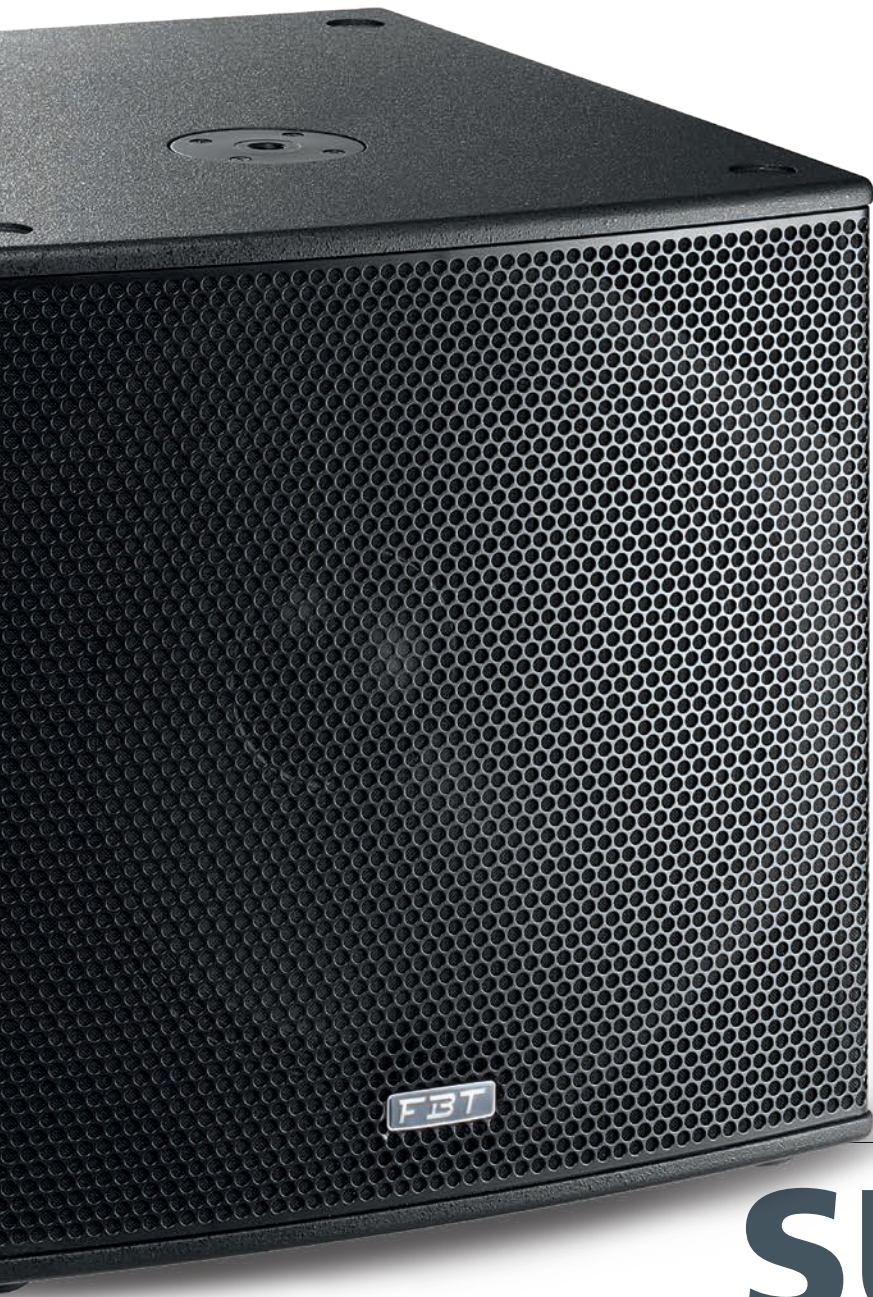


Model		CLA604a	CLA208Sa	CS1000	
Configuration	way	2	1	2	
Built-in amplifier cont. LF/HF	W RMS	350/80	400	600/400	
Built-in amplifier max. LF/HF	W RMS	400/100	600	-	
Built-in amplifier max. peak LF/HF	W	800/200	1200	1200/800	
Frequency response	@-6dB	130Hz - 20KHz	50Hz - 180Hz	40Hz - 20KHz	
Low frequency woofer	inch	6 x 4" - 1" coil	2 x 8" - 2" coil	12 - 2.5 coil	
High frequency driver	inch	4 x 1" - 1" coil	-	6 x 3 - 0.8 coil - neodymium	
Maximum SPL cont/peak	dB	122 / 125	125 / 129 half space	125 / 129	
Dispersion	H x V	100° x 20°	Omnidirectional	110° x 30°	
Input impedance	kOhm	22	22	22	
Crossover frequency	kHz	2.5	0.15	1.8	
AC Power requirements	VA	450	450	640	
Input connectors		XLR with loop	stereo XLR with loop/HP out	XLR with loop	
Power cord	m / ft	5 / 16.4	5 / 16.4	5 / 16.4	
Net dimensions (WxHxD)	mm	130x841x130	550x270x500	Satellite 105X530X120	Subwoofer 565X373X450
	inch	5.12x33.1x5.12	21.7x10.6x19.7	4.13x20.86x4.72	22.24x14.68x17.71
Net weight	Kg/Lb	9 / 19.84	20 / 44.09	Satellite 3.5 / 7.71	Subwoofer 22.4 / 49.38
Transport dimensions (WxHxD)	mm	220x930x220	690x370x625	695X473X580	
	inch	8.66x36.61x8.66	27.16x14.56x24.60	27.36x18.62x22.83	
Transport weight	Kg/Lb	11.5 / 25.35	23.5 / 51.80	33.5 / 73.85	

Accessories page 76	CLA604a	CLA208SA	CS1000
Nylon cover	VT-C 604 36122	VT-C 208 36123	VT-C 1000 41024
Carrying bag			VT-CB 1000 40730
Trolley			TR-100 40912
Stand adapter ø 35mm	VT-S 604/W 35723 Black - 37044 White		
Directional stand adapter	VT-DS 604/W 37053 Black - 37054 White		
Directional wall mount bracket	VT-W 604/W 35722 Black - 37043 White		VT-W 1000/W 40728 Black - 41039 White
Stand column h 59cm	VT-SC59 604/W 36879 Black - 36883 White		
Stand column h 114cm	VT-SC114 604/W 37041 Black - 37042 White		
Flying Bar			VT-F 1000/W 40913 Black - 41041 White
Joint Bar			VT-J 1000/W 40731 Black - 41040 White



SPEAKER | 27
SYSTEMS



SUBline



The new improved SUBLine incorporates Class D amplification, designed and made in Italy to FBT's exacting standards, plus switch-mode power supplies and DSP presets for accompanying full range enclosures. All models are road-ready with tour-grade birch plywood construction, integrated carrying handles and optional wheels. In addition, in/out stereo connectors aid flexibility, facilitating the use of a single sub in left-right stereo set-ups.

Created with the aim to maximize SPL/SIZE ratio, they have **Class D amplifiers, switch mode power supply and Digital Signal Processor** with presets to match any other FBT speaker.

With IN/OUT stereo connectors, it is possible to use only one subwoofer with Left and Right speakers

Optional wheels, ergonomic integrated carrying handles and tour-grade plywood cabinets **allow an easy transport**



SUBLine 218Sa

Processed active subwoofer
1200W RMS - 140dB SPL

- Bass-reflex design Subwoofer
- **2 x 460mm (18")** high excursion woofer with **75mm (3")** voice coil, custom made for FBT by B&C
- Frequency response from 30Hz to 120Hz
- **1200W RMS Class D** power amplifier with switch mode power supply
- DSP with 6 presets, 3 x EQ with 2 x LPF crossover settings, 6-step digital delay line
- Control panel with stereo XLR in/out, Volume, EQ presets, Delay, Phase reversal switch 0°-180°, 3 status LED indicators
- **18mm** Baltic birch plywood enclosure with heavy duty coating
- **2 x M20** threads for stand pole mount, 4 x aluminum ergonomic FBT handles, optional wheels
- Provides additional low frequency extension when used along with FBT'S MUSE 210LA 2 x 10" active line array system

SUBLine 218S

Sound Reinforcement Subwoofer
2400W RMS - 143dB SPL

- Neutrik Speakon NL4MD-V connectors IN & LINK OUT
- External digital processor required: FBT DLM26 Digital Loudspeaker Management



SUBLine 118Sa

Processed active subwoofer
1200W RMS - 134/137dB SPL

- Bass-reflex design subwoofer
- **460 mm (18")** high excursion woofer with **75 mm (3")** voice coil, custom made for FBT by B&C
- Frequency response from 33Hz - 100Hz
- **1200W RMS Class D** power amplifier with **switch mode power supply**
- **Digital Signal Processor with 6 presets**, 4 equalization with 2 LPF Crossover Settings, 6 step digital delay line up to 3.5m
- Control Panel with Stereo XLR in/outs, Volume, EQ Presets, Delay, Phase Reversal Switch 0°-180°, 3 status LED indicators
- **15 mm (0.59")** birch plywood scratch resistant enclosure with internal bracing
- **M20 (20mm)** top mount speaker stand socket and two aluminum ergonomic FBT handles

SUBLine 118S

Sound Reinforcement Subwoofer
1200W RMS - 133/136dB SPL

- Neutrik Speakon NL4MD-V connectors IN & LINK OUT
- External digital processor required: FBT DLM26 Digital Loudspeaker Management





SUBLine 115Sa

Processed active subwoofer
700W RMS - 132/135dB SPL

- Bass-reflex design with high SPL and punch
- **380mm (15")** high excursion magnet woofer with 75mm (3") voice coil
- Frequency response from 40Hz to 140Hz
- **New amplifier engineered and manufactured by FBT, 700W RMS LF in Class D**
- **Digital Signal processor with 8 presets**, 2 equalization with 2 LPF Crossover settings, cardioid configuration
- Control panel with Stereo XLR in/out, Volume, EQ presets, 8 steps Delay from 0.25m to 3.5m, Phase Reversal Switch 0°-180°, 3 status LED indicators
- **15 mm (0.59")** birch plywood scratch resistant enclosure with internal bracing
- **M20 (20mm)** top mount speaker stand socket and two aluminum ergonomic FBT handles



SUBLine 112Sa

Processed active subwoofer
700W RMS - 130/133dB SPL

- Bass-reflex design with high SPL and punch
- **320mm (12") high excursion magnet woofer with 75mm (3") voice coil**
- Frequency response from 40Hz to 140Hz
- **New amplifier engineered and manufactured by FBT, 700W RMS LF in Class D**
- **Digital Signal processor with 8 presets**, 2 equalization with 2 LPF Crossover settings, cardioid configuration
- Control panel with Stereo XLR in/out, Volume, EQ presets, 8 steps Delay from 0.25m to 3.5m, Phase Reversal Switch 0°-180°, 3 status LED indicators
- **15 mm (0.59")** birch plywood scratch resistant enclosure with internal bracing
- **M20 (20mm)** top mount speaker stand socket and two aluminum ergonomic FBT handles

SUBLine 115S

Sound Reinforcement Subwoofer
700W RMS - 135/135 dB SPL

- Neutrik Speakon NL4MD-V connectors IN & LINK OUT
- External digital processor required: FBT DLM26 Digital Loudspeaker Management

SUBLine 112S

Sound Reinforcement Subwoofer
700W RMS - 133/136dB SPL

- Neutrik Speakon NL4MD-V connectors IN & LINK OUT
- External digital processor required: FBT DLM26 Digital Loudspeaker Management



15 mm (5/8") Baltic birch plywood cabinet with scratch & scuff resistant paint finish

M20 (20 mm) top mount speaker stand socket, two aluminum carrying handles



Model		SUBLine 218Sa	SUBLine 118Sa	SUBLine 115Sa	SUBLine 112Sa
Configuration	way	1	1	1	1
Built-in amplifier max. LF/HF	W RMS	1200	1200	700	700
Built-in amplifier max. peak LF/HF	W	2400	2400	1400	1400
Frequency response	@-6dB	30Hz - 100Hz	33Hz - 100Hz	38Hz - 140Hz	42Hz - 140Hz
Low frequency woofer	inch	2x18 - 3 coil	1x18 - 3 coil	1x15 - 3 coil	1x12 - 2.5 coil
High frequency driver	inch	-	-	-	-
Maximum SPL cont/peak	dB	137 / 140 half-space	134 / 137 half-space	132 / 135 half-space	129 / 133 half-space
Dispersion	H x V	omnidirectional	omnidirectional	omnidirectional	omnidirectional
Input impedance	kOhm	22	22	22	22
Crossover frequency	kHz	100Hz	100Hz	90 or 140Hz	90 or 140Hz
AC Power requirements	VA	800	800	640	640
Input connectors		stereo XLR with loop	stereo XLR with loop	stereo XLR with loop, HP out	stereo XLR with loop, HP out
Power cord	m / ft	7 / 22.9	7 / 22.9	6 / 19.7	5 / 16.4
Net dimensions (WxHxD)	mm inch	975x661x670 38.18x25.98x26.37	555x572x666 21,8x22,5x26,2	500x517x570 19,7x20,3x22,4	430x447x480 16,9x21,5x18,9
Net weight	Kg / Lb	81 / 178.57	44,5 / 98,1	28 / 61,7	23 / 50,7
Transport dimensions(WxHxD)	mm inch	1150x830x800 45.27x30.70x31.49	800x642x800 31,5x25,3x31,5	600x617x670 23,6x24,3x26,4	530x547x580 20,9x21,5x22,8
Transport weight	Kg / Lb	96 / 207.23	54,5 / 120,1	32 / 70,5	27 / 59,5

Model		SUBLine 218S	SUBLine 118S	SUBLine 115S	SUBLine 112S
Configuration	way	1 reflex	1 reflex	1	1
Recommended amplifier	W RMS	2400	1200	700	700
Long term power	W	1200	600	350	350
Short term power IEC 268-5	W	4800	2400	1400	1400
Nominal impedance	Ohm	4	4	8	8
Frequency response	@-6dB	30Hz - 250Hz	33hz - 400hz	40Hz - 140Hz	45Hz - 140Hz
Low frequency woofer	inch	2x18 - 3 coil	18 - 3 coil	15 - 3 coil	12 - 3 coil
High frequency driver	inch	-	-	-	-
Sensitivity (@1W/1m)	dB	101	98.5	98	97
Maximum SPL cont/peak (Bi-Amp)	dB	139 / 143 half-space	133 / 136 half-space	132 / 135 half-space	130 / 133 half-space
Dispersion	H x V	omnidirectional	omnidirectional	omnidirectional	omnidirectional
Crossover frequency	kHz	external active	external active	FBT DLM26	FBT DLM26
Recommended HP filter		28hz - 24dboct	28hz - 24dboct	35hz - 24dboct	38hz - 24dboct
Input connectors		2 x Speakon NL4 in & thru	2 x Speakon NL4 in & thru	2 x Speakon NL4 in & thru	2 x Speakon NL4 in & thru
Net dimensions (WxHxD)	mm inch	970x661x670 38.18x25.98x26.37	555x572x666 21,8x22,5x26,2	500x517x570 19.7x20.3x22.4	430x447x480 16.9x21.5x18.9
Net weight	Kg/Lb	77 / 169.75	42 / 92.6	26 / 57.3	21 / 46.3
Transport dimensions(WxHxD)	mm inch	1150x780x800 45.27x30.70x31.49	800x642x800 31,5x25,3x31,5	600x617x670 23.6x24.3x26.4	530x547x580 20.9x21.5x22.8
Transport weight	Kg/Lb	90 / 198.41	52 / 114.6	28 / 61.7	25 / 55.1

Accessories page 77	SUBLine 218Sa	SUBLine 218Sa with wheels	SUBLine 18Sa	SUBLine 18Sa with wheels	SUBLine 15Sa	SUBLine 15Sa with wheels	SUBLine 12Sa
Nylon cover	SL-C 218S 38897	SL-CH 218S 38898	SL-C 118 41225	SL-CH 118 41226	SL-C 115 41227	SL-CH 115 41228	SL-C 112 41229
4 wheels kit: 2 with brake 80mm ø					KW-HM 80 30423		
4 wheels kit with brake 100mm ø	KBW-1004S 25197		KBW-1004S 25197				

STAGE | 31
MONITOR



StageMaxX

MAXX MORE! THE NEW STAGE MONITOR

FBT's brand new StageMaxX has been inspired by the need to have a product specifically designed and engineered for use as stage monitor, overcoming all compromises for a full user satisfaction.

The extremely heavy-duty and resonance free polypropylene cabinet is born from the enormous experience of FBT in gas injected mold engineering it acoustically behaves like a wooden cabinet allowing the perfect integration of all the components for an uncompromising quality in a compact, elegant, unobtrusive on stage, extremely comfortable and easy to carry product.

StageMaxx 12Ma is the right combination of all the quality features to be a perfect stage monitor:

- Low profile and aesthetic elegance
- Compact size
- Frequency response studied for stage monitor applications
- High headroom before feedback
- High sound quality
- Great power and dynamics
- Symmetric dispersion
- Aligned LF and HF acoustic centers
- Easy handling on stage
- Lightweight
- Heavy-duty polypropylene cabinet

StageMaxX features a 12" B&C loudspeaker custom made for FBT and coaxially mounted with a B&C 1" exit throat compression driver.

The coaxial configuration allows perfect alignment of the acoustic centers of the transducers, guaranteeing symmetry of dispersion and

improving focus of the stereo image in Left-Right configuration.

Bi-amplification design with high dynamic Class D amplifiers delivering 400W + 100W RMS through a switch mode power supply.

Digital Signal Processor with 4 factory equalization presets provides simple and efficient EQ adjustment to optimize the acoustical response for different applications. The FOH preset allows the use in suspended installation as well as 'drum fill' applications.

StageMaxX features two lateral M10 rigging points and wall mounting bracket for different applications (optional accessories).

3 frontal status LED indicators to control ON OFF limiter and protection state.

New Neutrik POWERCON TRUE 1 AC connector with Input and loop out to supply AC power to up to 7 additional StageMaxX speakers at 230Vac and 3 at 117Vac.

Three ergonomic integrated carrying handles, one frontally placed to easily drag and move the monitor on stage and the replaceable Teflon feet ensure sliding on stage with minimal wear.

The cabinet has 35° or 55° tilted front panel for an optimal listening distance for single user (35°) or for more users (55°).

The 4 presets are:

- **ORIGINAL:** is the typical "MaxX" sound adapted to "STAGE" application
- **HI-CUT/DRUM FILL:** provides less mid-high for a comfortable listening in near-field at high level
- **LO-CUT/DOUBLE:** provides less low frequency for better intelligibility and for optimal coupling in stereo configuration
- **FOH:** Front Of House use in suspended or pole-mount installations





StageMaxX 12Ma

Processed Active Reinforcement Monitor
400W + 100W RMS - 130dB SPL

- 2-way, bi-amplified, bass reflex design cabinet
- Coaxial custom FBT 320 mm (12") B&C speakers with 64 mm (2.5") voice coil
- B&C 25 mm (1") exit throat compression driver and 44 mm (1.7") voice coil
- **Bi-amp: high dynamic Class D amplifiers 400W + 100W RMS** to provide a pleasant sound even at loud volume
- High efficiency switch mode power supply
- Digital Signal Processor with 4 factory equalization presets
- Control Panel: XLR/Jack input and XLR link out, Volume, 4 Presets, HP Filter, 3 frontal status LED indicators
- Neutrik POWERCON TRUE 1 AC connector with Input and loop out to supply AC power to additional StageMaxX speakers
- 90° Directivity Horn
- Proprietary filtered algorithms, dynamic equalization at low frequencies, advanced energy control allows an high SPL while granting reliable and distortion free audio reproduction with high headroom
- Sturdy gas-injected polypropylene molded enclosures engineered to avoid undesired resonance
- Weather resistant coating under the grill to protect the driver and the speaker
- High SPL in a compact size monitor
- 35° or 55° tilted front panel for an optimal listening distance for single or multiple users
- Three ergonomic integrated carrying handles, two M10 rigging points
- Teflon replaceable feet allow an easy use on stage



Available in white colour:
 StageMaxX 12Ma W



StageMaxX
 Stage Monitor



Model		StageMaxX 12Ma
Configuration	way	2
Built-in amplifier cont. LF/HF	W RMS	350/80
Built-in amplifier max. LF/HF	W RMS	400/100
Built-in amplifier max. peak LF/HF	W	800/200
Frequency response	@-6dB	60Hz - 20KHz
Low frequency woofer	inch	12 - 2.5 coil
High frequency driver	inch	1 - 1.7 coil
Maximum SPL cont/peak	dB	124 / 130
Dispersion	H x V	90°
Input impedance	kOhm	22
Crossover frequency	kHz	1.8
AC Power requirements	VA	450
Input connectors		XLR with loop
Power cord	m / ft	5 / 16.4
Net dimensions (WxHxD)	mm inch	550x289x392 21.65x11.37x15.43
Net weight	Kg / Lb	13.6 / 29.98
Transport dimensions(WxHxD)	mm inch	670x430x500 26.37x16.92x19.68
Transport weight	Kg / Lb	16.4 / 36.15

Accessories page 77		StageMaxX 12Ma
Nylon cover		SM-C 12 36065
Wall metal bracket to mount in horizontal position		SM-U 12 36066 Black 36753 White
Metal bracket with top-hat speaker stand socket		SM-S 12 37099



SM-S 12
Metal bracket with top-hat speaker stand socket

MSA 300
Aluminium speaker stand Air-Cushioned



SM-U 12
Wall metal bracket to mount in horizontal position



Monitor 55°



Monitor 35°

SPEAKER | 35
SYSTEMS



HiMaxX

HiMaxX

Speaker Systems

36



A BENCHMARK IN SOUND REINFORCEMENT

With the **HiMaxX series**, **FBT establishes a reference** point on the scenario of 12" and 15" sound reinforcement polypropylene enclosures, introducing performance and technical content of an impressive standard.

The **engineering of the enclosures**, the use of **switch mode power supplies** and **high-efficiency power amplifiers**, the custom design of the transducers made FBT's R&D team achieve the maximum in power/weight ratio.

Three models; two 2-way full-range enclosures in polypropylene, **HiMaxX 40** (12" + 1") and **HiMaxX 60** (15" + 1.4"), plus a compact 18" bandpass SUB in birch plywood (**HiMaxX 100Sa**). Compact and light weight, HiMaxX brilliantly solve all the most demanding needs for **bands**, musicians and professionals looking for **powerful, versatile and very high quality** loudspeaker enclosures. Ideal for live and sound reinforcement applications requiring **ease of transport**, they are also suited to **fixed installations**, thanks to the cabinets' design and optional accessories.

HiMaxX 60a
1100+250W
HiMaxX 60
700W



HiMaxX 40a
1000+250W
HiMaxX 40
500W



HiMaxX 100Sa
1200W



HiMaxX
Speaker Systems

Amazing audio quality, thrilling performance, innovative design and extreme reliability





- A powerful dynamic design for aggressive clean-cut lines. **A sturdy light-weight enclosure that ensures great versatility** and is ready for installation, thanks to its special mounting points and optional accessories.

The asymmetrical design enables the enclosures to be used as stage monitors.

- A specially designed control panel ensures **ease of use and intuitive control**. Mic/Line input, auxiliary stereo input with (HiMaxX 40a), 3-band EQ, ground-lift, diagnostic LED.



- Loudspeaker components are engineered in collaboration with B&C. FBT studied and designed **special chassis**. A **more efficient ventilation circuit** with a consequent reduction of 2dB "power compression", a **considerably stiffer** cone to improve reliability and distortion and an even **more powerful neodymium magnet** to increase control and efficiency. The voice coil has a diameter of 75 mm (3") for **higher power handling and reliability**.

- **B&C compression driver** with a 25 mm (1") throat and 44 mm (1.7") coil (HiMaxX 40) for high power handling. Thanks to the use of a shorting copper cap, high frequencies are even more dynamic and crystal-clear.

- The development of the innovative amplifier is the result of years of research by the FBT R&D labs. It manages to combine the contrasting features of **lightness, high power, efficiency and reliability**, using the very latest technology. A **switch mode power supply** to reduce the weight and increase the power output velocity, a very high performance **PWM amplifier for the low frequencies**, to maximize the power fed out with minimum heat dissipation. A **Class G amplifier for the high frequencies** enables to achieve the audio quality of a Class A, with a much higher output.

- **The silent preamplifier** manufactured with SMD technology has the job of handling the equalization, 24dB/oct crossover, sophisticated protections, limiter and the commands of the control panel.

- **The horn's profile** has been **designed** to ensure greater directivity control and lower distortion. The dispersion angle is 90°H x 60°V.



BOX 100
Ceiling bracket
balancing stand



MSA 300
Adjustable air-cushion floor
stand (ø 35 mm - 1.38")
- max weight
56 Kg (124 Lb)



HiMaxX 60a

Processed Active Speaker
1100W + 250W RMS - 135dB SPL

- **B&C custom designed 380 mm (15") neodymium woofer** with 75 mm (3") voice coil
- **B&C 36 mm (1.4") compression driver** with 64 mm (2.5") voice coil
- **1100W RMS PWM LF power amplifier**
- **250W RMS Class G HF power amplifier**
- **Control panel with:**
 - **XLR Input and XLR Link**
 - **Gain and Volume functions in a single potentiometer** improving the dynamic range and input signal/noise ratio
 - **3-band EQ** (Bass, Mid, High)
 - **Ground-lift**
 - **Diagnostic LED**



HiMaxX 60

Sound Reinforcement Speaker
700W / 8ohm - 132dB SPL



Active HiMaxX

2-way, bi-amplified in Bass- Reflex design

Switch mode power supply for an excellent ratio weight/power

Sturdy cabinet in polypropylene also designed for stage monitor use

Analog signal processor with limiter

4 x M10 suspension points, 35 mm Ø (1.38") top-hat for speaker stand placement and wall bracket mount flange, 2 integrated carrying handles

90°H x 60°V constant directivity horn

Passive HiMaxX

Passive crossover filter featuring "soft-trip" circuitry to ensure full protection of LF woofer and HF driver

2 NL-4 Neutrik™ Speakon connectors



HiMaxX 40a

Processed Active Speaker
1000W + 250W RMS - 133dB SPL

- B&C custom designed 320 mm (12") neodymium woofer with 75 mm (3") voice coil
- B&C 25 mm (1") compression driver with 44 mm (1.7") voice coil
- 1000W RMS PWM LF power amplifier
- 250W RMS Class G HF power amplifier
- Control panel with:
 - Gain and Volume functions in a single potentiometer improving the dynamic range and input signal/noise ratio
 - Combo XLR/jack input XLR link
 - Mic/Line selection
 - Independent RCA input channel with separate volume control to connect external devices such as MP3, CD, PC players
 - 3-band EQ (Bass, Mid, High)
 - Ground-Lift
 - Diagnostic LED
- Enclosure suitable for stacking

HiMaxX 40

Sound Reinforcement Speaker
500W / 8ohm - 131dB SPL



HiMaxX 100Sa

Processed Active Subwoofer
1200W RMS - 139dB SPL

- Bandpass subwoofer design
- 18" (460 mm) custom neodymium B&C woofer with a 3" (75 mm) voice coil
- Built-in 1200W RMS PWM amplifier
- Switch mode power supply
- Analogue signal processor with limiter
- Control panel with:
 - XLR/input and XLR stereo outputs with Hi-Pass, filter for connecting the satellites
 - Volume
 - Ground-Lift
 - 0°-180° phase inverter switch
 - Limiter LED
- 18 mm (0.7") birch plywood enclosure
- The special "bandpass" acoustic loading increases efficiency and maximum SPL
- 8 x M10 suspension points, stand socket and two integrated wooden handles
- Optional 4 swivel-mount casters 80 mm ø (3.15") on request



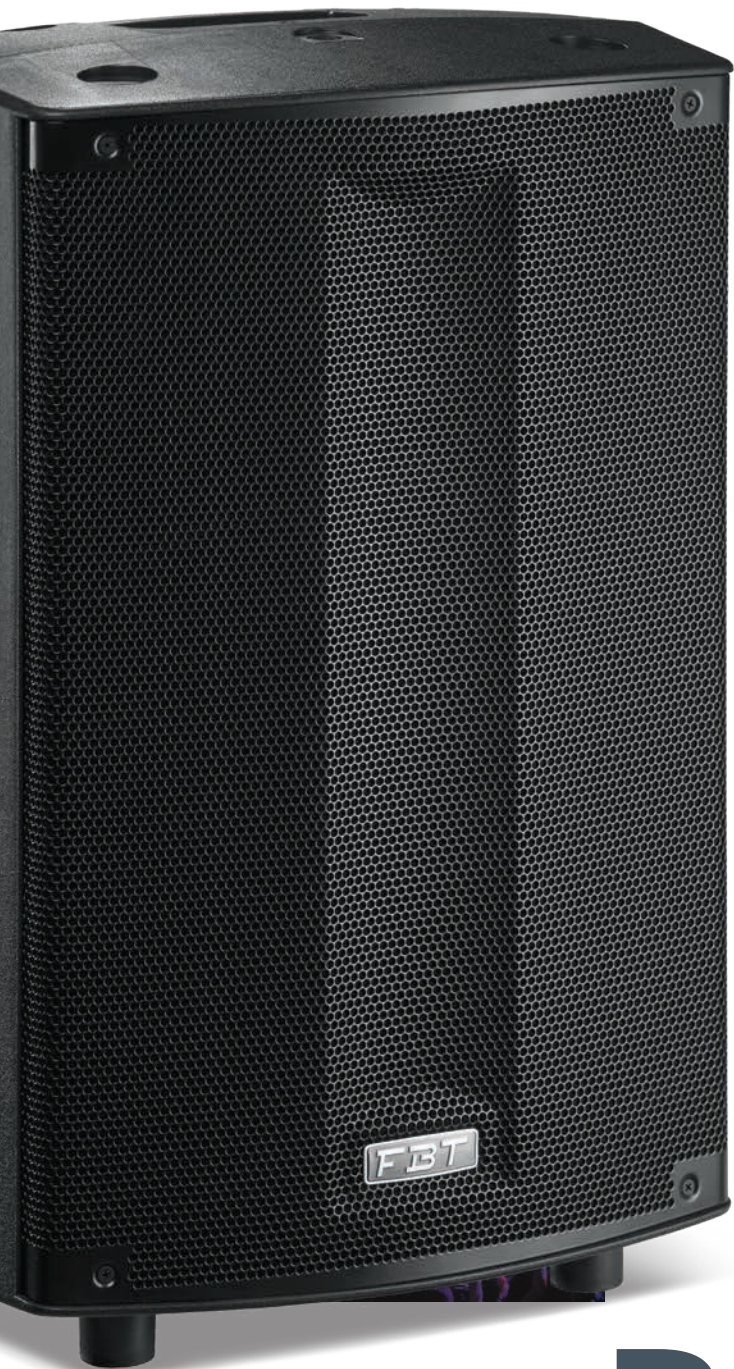


Model		HiMaxX 60a	HiMaxX 40a	HiMaxX 100Sa
Configuration	way	2	2	Band-Pass
Built-in amplifier max. LF/HF	W RMS	1100/250	1000/250	1200
Built-in amplifier max. peak LF/HF	W	2200/500	1600/500	2400
Frequency response	@-6dB	40Hz - 20kHz	45Hz - 20kHz	38 - 120Hz
Low frequency woofer	inch	1x15 - 3 coil	1x12 - 3 coil	1x18 - 3 coil
High frequency driver	inch	1.4 - 2.5 coil	1 - 1.7 coil	-
Maximum SPL cont./peak	dB	129/135	127/133	135/139
Dispersion	H x V	90° x 60°	90° x 60°	omnidirectional
Input impedance	kohm	22	22	22
Crossover frequency	kHz	1.2	1.6	active 120
Input connectors		XLR with loop	XLR/jack with loop RCA aux	stereo XLR with loop
Power cord	m / ft	5 / 16.4	5 / 16.4	5 / 16.4
Net dimensions (WxHxD)	mm inch	482x757x427 19x29.8x16.8	407x634x370 16x24.9x14.5	530x605x655 21x23.8x25.8
Net weight	Kg / Lb	28.3 / 62.4	17.9 / 39.4	43 / 94.8
Transport dimensions (WxHxD)	mm inch	520x867x600 20.4x34.1x23.6	495x720x470 19.5x28.3x18.5	660x735x785 26x29x31
Transport weight	Kg / Lb	30.3 / 66.8	20.5 / 45.2	47 / 103.6

Model		HiMaxX 60	HiMaxX 40
Configuration	way	2	2
Recommended amplifier	W RMS	700	500
Long term power	W	350	250
Short term power (IEC 268-5)	W	1400	1000
Nominal impedance	ohm	8	8
Frequency response	@-6dB	40Hz - 20kHz	50Hz - 20kHz
Low frequency woofer	inch	1x15 - 3 coil	1x12 - 3 coil
High frequency driver	inch	1.4 - 2.5 coil	1 - 1.7coil
Sensitivity (@1W/1m)	dB	99	99
Maximum SPL cont./peak	dB	129/132	127/131
Dispersion	H x V	90° x 60°	90° x 60°
Crossover frequency	kHz	1.3	1.6
Recommended HP filter		35Hz - 24dBoc	45Hz - 24dBoc
Recommended external filter		-	-
Input connectors		2 x Speakon	2 x Speakon
Net dimensions (WxHxD)	mm inch	482x757x427 19x29.8x16.8	407x634x370 16x24.9x14.5
Net weight	Kg / Lb	26 / 57.3	16 / 35.2
Transport dimensions (WxHxD)	mm inch	520x867x600 20.4x34.1x23.6	495x720x470 19.5x28.3x18.5
Transport weight	Kg / Lb	28.5 / 62.8	18.5 / 40.8

Accessories page 77	HiMaxX 60a	HiMaxX 40a	HiMaxX 100Sa	HiMaxX 100Sa with wheels
Nylon cover	V 33 15777	V 29 10186	V 56 29846	HM-CH 100 37049
Directional wall mount bracket	SJ-8 18614	BOX 100 10187		
Wall metal bracket to mount in vertical position	BOX 105 15772	BOX 101 10188		
4 wheels kit: 2 with brake 80mm ø			KW-HM 80 30423	

SPEAKER | 43
SYSTEMS



ProMaxX

THE NEW PROMAXX BY FBT REPRESENTS THE NEXT STEP IN THE EVOLUTION OF A PORTABLE SOUND CLASSIC

With a specially developed polypropylene cabinet and stylish full grille aesthetic, the new ProMaxX by FBT represents the next step in the evolution of a portable sound classic.

Equipped with custom FBT speakers complete with B&C's renowned compression driver technology, **PROMAXX combines true made-in-Italy quality and style.** At its heart is a purpose-built FBT amplifier module with a switch-mode power supply. For the low frequency section, 700W RMS is driven via a highly efficient Class-D topology, boasting extremely low THD. For HF, meanwhile, 200W RMS is delivered by a Class-H / AB design chosen to ensure the highest definition of audio performance at high frequencies.

Also onboard is a powerful digital signal processing (DSP) platform made available to users of all levels thanks to an intuitive graphical user interface. Located on the rear of the enclosure, the menu-driven system is navigated via a single rotary control with push-to-select functionality.

Users can choose between 6 equalizer presets, each carefully designed by FBT engineers to ensure that every application is catered for (see below). Additionally, 2 preset slots are available for users to form their own designs, using 5 parametric equalizers per slot. Also available is a high-pass filter, a mic/line selector, low, mid and high tone settings and an optional delay of between 0 and 3.5 metres. Finally, users can exclusively choose between two limiter modes, MAX-SPL or MAX-QUALITY, to best suit their performance.

The PROMAXX feature-set is matched by the enclosure's versatility, with options for pole-mounting, wall-hanging, suspension or even deployment in an array. The result is the most accessible PROMAXX yet.



Powerful and Versatile - Lightweight - Increased SPL - DSP with 8 presets

Presets for every occasion

PROMAXX offers 6 presets to cater for a broad variety of uses, each crafted by FBT engineers. Employing powerful DSP, the presets ensure reliability while eliminating distortion.

ORIGINAL / LIVE The renowned, smooth FBT sound

VOCAL A special EQ setting to maximise speech intelligibility

DJ Designed to keep the energy high and your audience dancing

TOURING The reliability and the roar of the industry's most popular touring systems

LOUDNESS The ultimate preset for listening at a medium or low volume

WARM A special setting to emphasise full-bodied, low-mid frequencies.

Two ergonomic carrying handles, **M10 fly points**, top-hat speaker stand socket.

2 - way enclosures have 3 monitor tapers for use as a floor wedge at 12°, 40°, 55°, providing extraordinary versatility **for monitor application.**



12°



40°



55°

Active ProMaxX

2-way, bi-amplified, bass reflex design cabinet

Biamped: 700W RMS LF, 200W RMS HF, power amplifiers in Class D for LF and in Class H/AB for HF with switch mode power supplies

Digital signal processor with graphic display

Control Panel features balanced XLR/Jack input, XLR LINK OUT, 2 x Volume, RCA Stereo input, DSP display with rotative encoder and push

2 x M10 suspension points, 35mm (1,3/8") top-hat speaker stand socket, wall bracket mount flange plate

90°H x 60°V constant directivity horn

Front of House or Stage Floor Monitor: with 12°, 40° and 55° monitoring angles

Passive ProMaxX

Built-in passive crossover with soft-trip protection for the LF woofer and HF driver

Speakon NL-4 IN and LINK OUT connectors



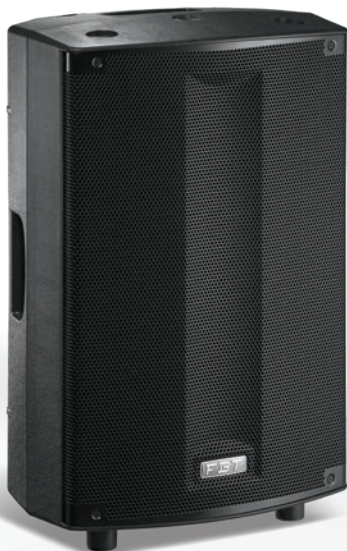
ProMaxX 114a

Processed Active Speaker
700W + 200W - 135.5dB SPL

- 355mm (14") LF neodymium magnet woofer with 75mm (3") voice coil, custom made for FBT by B&C
- 35mm (1,4") exit throat B&C HF compression driver with 64mm (2,5") voice coil
- Frequency response from 45Hz to 20 kHz
- **Compact Dimensions:** ProMaxX 114a uses the same size gas-injected polypropylene molded enclosure as the ProMaxX 112a, but features our 14" LF Woofer for lower frequency SPL
- **Full grille design with black acoustic cloth**
- Extremely light, only 17,4kg / 40.78lb

ProMaxX 114

Passive reinforcement speaker
700W / 8ohm - 132dB SPL



ProMaxX 112a

Processed Active Speaker
700W + 200W - 133dB SPL

- 320mm (12") LF magnet woofer with 64mm (2.5") voice coil, custom made for FBT
- 25mm (1") exit throat B&C HF magnet compression driver with 34mm (1.4") voice coil
- Frequency response from 48Hz to 20KHz
- Sturdy, gas-injected polypropylene molded enclosures, engineered to contain undesired resonance
- **Full grille design with black acoustic cloth**
- Extremely light only 14.8Kg/32.62lb

ProMaxX 112

Passive reinforcement speaker
400W / 8ohm - 129dB SPL





ProMaxX 110a

Processed Active Speaker
700W + 200W - 131dB SPL

- 250mm (10") LF magnet woofer with 50mm (2") voice coil, custom made for FBT
- 25mm (1") throat exit B&C HF magnet compression driver with 34mm (1.4") voice coil
- Frequency response from 58Hz to 20KHz
- Sturdy, gas-injected polypropylene molded enclosures, engineered to contain undesired resonance
- Full grille design with black acoustic cloth
- Extremely light only 10.3kg/22.70lb

ProMaxX 110

Passive reinforcement speaker
300W / 8ohm - 127dB SPL





Model		ProMaxX 114a	ProMaxX 112a	ProMaxX 110a
Configuration	way	2	2	2
Built-in amplifier cont. LF/HF	W RMS	700/200	700/200	700/200
Built-in amplifier max. LF/HF	W RMS	-	-	-
Built-in amplifier max. peak LF/HF	W	1400/400	1400/400	1400/400
Frequency response	@-6dB	45Hz - 20KHz	48Hz - 20KHz	58Hz - 20KHz
Low frequency woofer	inch	14 - 3 coil neodymium	12 - 2.5 coil	10 - 2 coil
High frequency driver	inch	1,4 - 2,5 coil	1 - 1,4 coil	1 - 1,4 coil
Maximum SPL cont/peak	dB	127,5 / 135,5	126 / 133	124 / 131
Dispersion	H x V	90° x 60°	90° x 60°	90° x 60°
Input impedance	kOhm	22	22	22
Crossover frequency	kHz	-	-	-
AC Power requirements	VA	640	640	640
Input connectors		XLR with loop, RCA ST	XLR with loop, RCA ST	XLR with loop, RCA ST
Power cord	m/ft	5 / 16,4	5 / 16,4	5 / 16,4
Net dimensions (WxHxD)	mm inch	402x644x345 15,8x25,4x13,6	402x644x345 15,8x25,4x13,6	320x550x275 12,6x21,6x10,8
Net weight	kg/lb	17.5 / 40.78	14.8 / 32.62	10.3 / 22.70
Transport dimensions(WxHxD)	mm inch	500x745x440 19,7x29,3x17,3	500x745x440 19,7x29,3x17,3	400x630x360 15,7x24,8x14,2
Transport weight	kg/lb	20.1 / 44.31	17.8 / 39.24	12.8 / 28.21

Model		ProMaxX 114	ProMaxX 112	ProMaxX 110
Configuration	way	2	2	2
Recommended amplifier	W RMS	700	400	300
Long term power	W	350	200	150
Short term power IEC 268-5	W	1400	800	600
Nominal impedance	Ohm	8	8	8
Frequency response	@-6dB	50Hz - 18KHz	55Hz - 18KHz	60Hz - 18KHz
Low frequency woofer	inch	14 - 3 coil - neodymium	12 - 2.5 coil	10 - 2 coil
High frequency driver	inch	1.4 - 2.5 coil	1 - 1.4 coil	1 - 1.4 coil
Sensitivity (@1W/1m)	dB	100	99	97
Maximum SPL cont/peak	dB	128 / 132	125 / 129	122 / 127
Dispersion	H x V	90° x 60°	90° x 60°	90° x 60°
Crossover frequency	kHz	1.3	1.6	1.8
Recommended HP filter		40hz - 24dboct	45hz - 24dboct	50hz - 24dboct
Input connectors		2 x Speakon NL4 in & thru	2 x Speakon NL4 in & thru	2 x Speakon NL4 in & thru
Net dimensions (WxHxD)	mm inch	402x644x345 15,8x25,4x13,6	402x644x345 15,8x25,4x13,6	320x550x275 12,6x21,6x10,8
Net weight	kg/lb	15 / 33.06	13.4 / 29.54	8.9 / 19.62
Transport dimensions (WxHxD)	mm inch	500x745x440 19,7x29,3x17,3	500x745x440 19,7x29,3x17,3	400x630x360 15,7x24,8x14,2
Transport weight	kg/lb	18 / 39.68	16.4 / 36.15	11.4 / 25.13

Accessories page 77		ProMaxX 114a	ProMaxX 112a	ProMaxX 110a
Nylon cover		V 64 33326	V 64 33326	V 63 33325
Wall metal bracket to mount in horizontal position		BOX 128 33329	BOX 128 33329	BOX 127 33328
4 wheels kit: 2 with brake 80mm ø				

SPEAKER | 49
SYSTEMS



J MaxX

MAXIMUM PERFORMANCE FROM NEW FBT JMAXX ITALY'S AUDIO SPECIALIST UNVEILS THE LATEST VERSION OF ITS POPULAR MAXX SERIES

The new FBT JMaxX series combines ease of use and versatility for many portable or installed sound applications: musicians, DJs, AVL contractors, rental sound reinforcement, corporate events, houses of worship, bars and clubs.

With its eye-catching gas-injected forms designed to virtually eliminate undesired enclosure resonance and reinforce strong low frequency performance, the **JMaxX series** of powered loudspeakers is available in three elegantly crafted two-way models: the 14-inch **JMaxX 114A**; the 12-inch **JMaxX 112A**; and the 10-inch **JMaxX 110A**. All are equipped with FBT's latest **90° x 60° HF horn** design which delivers improved projection, accuracy, and dispersion of the mid and high frequencies.

Providing a myriad of possibilities for bands, DJs and solo artists, as well as for permanent installations, each JMaxX model is actually four loudspeakers in one. Derived from a decade of experience of portable sound reinforcement, the carefully tailored equalisation presets offer highly intelligible response for vocals and floor monitoring; slightly boosted response in lounge bar applications; punchy and forward sound for DJs and night venues; and a general-purpose EQ setting that mirrors the original and familiar FBTMaxX voicing.



Suspended installation

Common to all JMaxX models is FBT's latest generation lightweight 700W + 200W Class D power amplifier with universal switch mode power supply, delivering abundant power and headroom to reproduce even the largest transients without distortion.

XLR inputs and outputs, volume control, the EQ presets and filters, and ground lift switch are all conveniently located on a clearly laid out rear panel, making loudspeaker setup and operation intuitive and consistently repeatable.

JMaxX 114A
700+200W



JMaxX 112A
700+200W



JMaxX 110A
700+200W



More powerful Class D amplifier - Extra lightweight polypropylene cabinets - Higher SPL for optimal audio reproduction. New DSP with four EQ presets



JMaxX's versatility is further underscored by the many mounting and fixing options that the ergonomically styled cabinets provide. Mounting in fixed installations is made easy using the M10 suspension points or wall bracket flange plates, while portable use is facilitated by the built-in 35mm pole mount socket.

There's no need for separate stage monitors, as **JMaxX's cabinet profiles are designed with 12°, 40°, and 55° wedge angles**, and when used with the specific floor monitoring EQ presets, will ensure that performers hear themselves with ultimate clarity.

The JMaxX is making its international debut on booth C78 of Hall 8.0 at Prolight+Sound from April 2nd to April 5th 2019.



JMaxX

2-way, bi-amplified bass reflex design cabinet

700W RMS LF, 200W RMS HF, Class D power amplifiers with switch mode power supply

DSP with **4-EQ presets**

Control panel with: XLR IN and XLR LINK, Volume, EQ presets, HP filter, GND LFT switch

2 x **M10** suspension points, 35mm (1.3/8") top-hat speaker stand socket, wall bracket mount flange plate

90°H x 60°V constant directivity horn

Stage monitor angling facility with **12°, 40° or 55° taper**



JMaxX 114A

Processed 2-way active loudspeaker
700W + 700W - 132 dB SPL (peak)

- **14" LF woofer with 2.5" voice coil**
- **1" exit throat HF compression driver with 1.4" voice coil**
- Frequency response from **45Hz to 20 kHz**
- Extremely lightweight: only 14Kg





J MaxX 112A

Processed 2-way active loudspeaker
700W + 700W - 131 dB SPL (peak)

- 12" LF woofer with 2" voice coil
- 1" exit throat HF compression driver with 1" voice coil
- Frequency response from 48Hz to 20 kHz
- Extremely lightweight: only 13.8Kg



J MaxX 110A

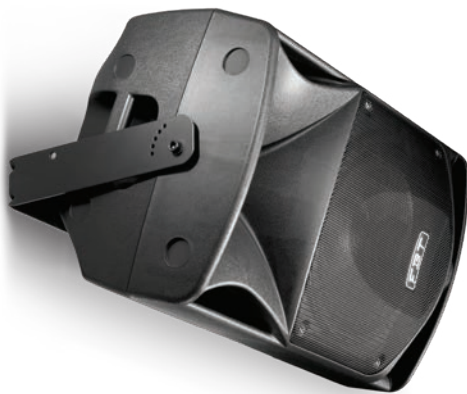
Processed 2-way active loudspeaker
700W + 700W - 129,5 dB SPL (peak)

- 10" LF woofer with 2" voice coil
- 1" exit throat HF compression driver with 1" voice coil
- Frequency response from 58Hz to 20 kHz
- Extremely lightweight: only 11Kg





Model		JMaxx 114A	JMaxx 112A	JMaxx 110A
Configuration	way	2	2	2
Built-in amplifier max. rms LF/HF	W	700/200	700/200	700/200
Built-in amplifier max. peak LF/HF	W	1400/400	1400/400	1400/400
Frequency response	@-6dB	45Hz - 20KHz	48Hz - 20KHz	58Hz - 20KHz
Low frequency woofer	inch	14 - 2.5 coil	12 - 2 coil	10 - 2 coil
High frequency driver	inch	1 - 1.4 coil	1 - 1 coil	1 - 1 coil
Maximum SPL cont/peak	dB	126 / 132	125 / 131	123.5 / 129.5
Dispersion	H x V	90° x 60°	90° x 60°	90° x 60°
Input impedance	kOhm	22	22	22
Crossover	kHz	1.6	1.6	1.8
AC Power requirements	VA	640	640	640
Input connectors		XLR with loop, Jack 6.3mm	XLR with loop, Jack 6.3mm	XLR with loop, Jack 6.3mm
Power cord	mm inch	5 16,4	5 16,4	5 16,4
AC Power connector		IEC	IEC	IEC
Net dimensions (WxHxD)	mm inch	402x644x345 15,8x25,4x13,6	402x644x345 15,8x25,4x13,6	320x550x275 12,6x21,6x10,8
Net weight	kg/lb	14/30.8	13.8/30.4	11/24.2
Transport dimensions(WxHxD)	mm inch	500x745x440 19,7x29,3x17,3	500x745x440 19,7x29,3x17,3	400x630x360 15,7x24,8x14,2
Transport weight	kg/lb	16.6/36.6	16.5/36.4	13.5/29.8



Two ergonomic carrying handles, **M10 fly points**, top-hat speaker stand socket.

2 - way enclosures have 3 monitor tapers for use as a floor wedge at 12°, 45°, 55°, providing extraordinary versatility **for monitor application.**



12°



45°



55°

SPEAKER SYSTEMS | 55



J

NEW J SERIES - MORE TECHNOLOGY FOR IMPROVED PERFORMANCE AND QUALITY VALUE FOR MONEY

The **new J series** is a technologically advanced range of products that improves on the performance of the previous Jolly line. The new **J series** is a competitive, value for money range of speakers.

The range is based on the development of three new high efficiency class-D amplifiers with power specifications of 350 + 100W for the **J 15A**, **J 12A** and **DJ 15A**, 200 + 50W for the **J 8A** and 80 + 40W for the **J 5A**.

These amplifiers have been designed 'from the ground up' in FBT's R&D laboratories.

The largest amplifier model that equips the **J 15A**, **J 12A** and **DJ 15A** has a switch mode power supply as well as a digital signal processor with 4 pre-sets (ORIGINAL/FLOOR-VOCAL/BOOST-LOUNGE/CLUB-DJ).

The **J 8A** and **J 5A** amplifiers have toroidal transformer power supplies. The **J 8A** has a digital signal processor with 2 pre-sets (ORIGINAL/BOOST), whilst the **J 5A** has analog signal processing.

The speakers have been completely redesigned, introducing the technological developments of recent years to achieve a far superior efficiency and linearity.

Following from the new J series, FBT bring you the **DJ 15A**, designed with today's modern DJ in mind. The **DJ 15A** has invaluable features allowing quality audio playback using our revolutionary DSP technology. This includes 4 presets enabling the DJ to change the sound of their music to suit the environment they play within.

A multipurpose performer: J speakers are versatile and easy to use in applications like Band PA, DJ, personal monitor, stage performance, theatres and halls, clubs, gyms, bars and more.



S/J8
Adjustable wall
mount stand



S/J5
Adjustable wall mount
stand

These DSP presets will allow the DJ's audience to enjoy improved sound quality and SPL, especially in bass reproduction at high volume. The **DJ 15A** also has another useful feature for DJs, including a two channel input mixer allowing

the DJ to plug a music source and microphone direct into the speaker, giving separate control over volume for both devices. You can also daisy chain these speaker together if required. Ideal for many application of today's modern DJ.

J 15A
350+100W
J 15
300W
DJ 15A
350 + 100W



J 12A
350+100W
J 12
300W



J 8A
200+50W
J 8
160W



J 5A
80+40W
J 5
80W
J 5T
50W



A comprehensive line to fulfill all professional audio needs



BOX 112
Horizontal wall
mounting bracket



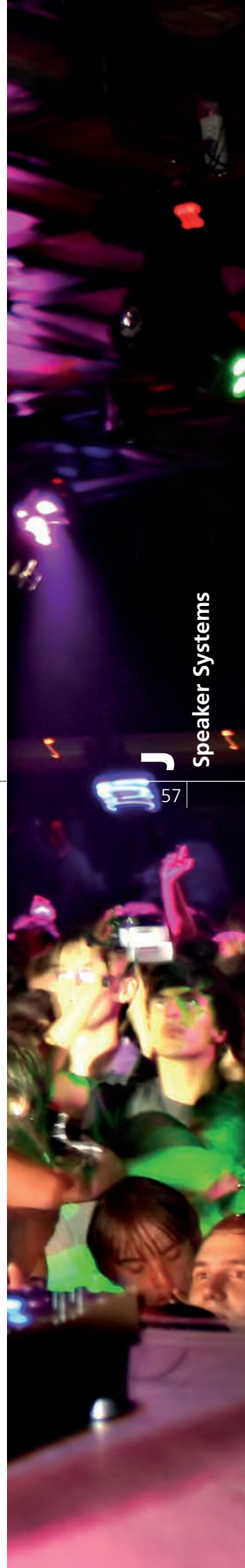
S/J8U
Wall mounting
bracket



S/J5U
Wall mounting
bracket



J 5AW





J 15A

Processed Active Monitor
350W+ 100W RMS - 129dB SPL

- 380 mm (15") custom woofer with improved efficiency and linearity
- 350Wrms class D amplifier for LF and 100Wrms for HF.
- High efficiency switch mode power supply
- On-board Digital Signal processing with dynamic equalizations and protections for high SPL and high reliability.
- 4 DSP preset for maximum acoustical flexibility

J 15

Sound Reinforcement Monitor
300W - 127dB SPL

- NL-4 Neutrik™ Speakon input and link connectors



DJ 15A

Processed Active Monitor
350W+ 100W RMS - 129dB SPL

- Same woofer, amplifier, power supply and On-Board Digital Signal processing as J 15A
- 4 DSP preset specially designed for DJ users
- Two channels input mixer with stereo/mono OUT
- Input panel with XLR/jack input and XLR Link, Mic/Line switch, Level, HP filter, 4 Preset Switch, Stereo RCA input, level, XLR OUT for daisy-chaining with Stereo/Mono switch selector



J 12A

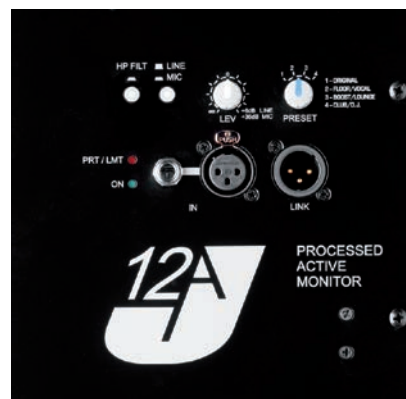
Processed Active Monitor
350W + 50W RMS - 128 dB SPL

- 320 mm (12") custom woofer with improved efficiency and linearity
- 350Wrms class D amplifier for LF and 100Wrms for HF.
- High efficiency switch mode power supply
- On-board Digital Signal processing with dynamic equalizations and protections for high SPL and high reliability.
- 4 DSP preset for maximum acoustical flexibility

J 12

Sound Reinforcement Monitor
300W - 127dB SPL

- NL-4 Neutrik™ Speakon input and link connectors



Active J

2-way bi-amplified system in Bass-Reflex
Polypropylene enclosure with integrated handle except J 5A/5

2 x M10 anchoring points (**15A, 12A, DJ 15A**), 2 x M6 suspension points (**8A, 5A**)

25mm (1") HF custom compression driver (**15A, 12A, 8A, DJ 15A**)

90°H x 60°V constant directivity horn (**15A, 12A, 8A, DJ 15A**)

HP-filter for use with a Subwoofer

Control Panel: XLR/Jack input and XLR link, Mic/Line switch, Level, HP filter, EQ presets (**J 15, J 12, J 8**) Combo XLR/Jack and XLR link, Mic/Line switch, Level, HP filter (**J 5**)

Passive J

Internal passive crossover filter with "soft-trip" protection circuits on woofer and compression driver

Linear frequency response over the entire dispersion angle





J 8A

Processed Active Monitor
200W+ 50W RMS - 124dB SPL

- 200 mm (8") custom woofer with improved efficiency and linearity
- 200Wrms class D amplifier for LF and 50Wrms for HF.
- Low noise toroidal transformer power supply
- On-board Digital Signal processing with dynamic equalizations and protections for high SPL and high reliability.
- 2 DSP preset for maximum acoustical flexibility
- Available in white colour **J 8AW**

J 8

Sound Reinforcement Monitor
160W - 121.5dB SPL

- NL-4 Neutrik™ Speakon input and link connectors
- Available in white colour **J 8W**



J 5A

Processed Active Monitor
80W+ 40W RMS - 117dB SPL

- 130 mm (5") custom woofer with improved efficiency and linearity
- 25 mm (1") neodymium silk dome tweeter with soft compression and phase plug
- 80Wrms class D amplifier for LF and 40Wrms for HF
- Low noise toroidal transformer power supply
- On-board analog signal processing with limiter for high SPL and high reliability
- Available in white colour **J 5AW**

J 5

Sound Reinforcement Monitor
80W - 117dB SPL

- Input panel with jack and terminal connector for bare wires
- Available in white color **J 5W**

J 5T

Sound Reinforcement Monitor
50W - 114dB SPL

- 4 position volume selector: 3W - 12,5W - 25W - 50W / 100V
- Input panel with terminal connector for bare wires
- Also available in white colour **J 5TW**





Model	J15a	J12a	J8a	J5a	DJ 15a
Configuration	way 2	2	2	2	2
Built-in amplifier cont. rms LF/HF	W 300/70	300/70	150/40	60/30	300/70
Built-in amplifier max. rms LF/HF	W 350/100	350/50	200/50	80/40	350/100
Built-in amplifier max. peak LF/HF	W 700/200	700/200	400/100	160/80	700/200
Frequency response	@-6dB 48Hz - 20KHz	50Hz - 20KHz	60Hz - 20KHz	80Hz - 20KHz	48Hz - 20KHz
Low frequency woofer	inch 15 - 2 coil	12 - 2 coil	8 - 1.7 coil	5 - 1 coil	15 - 2 coil
High frequency driver	inch 1 - 1 coil	1 - 1 coil	1 - 1 coil	1 dome - 0.75coil	1 - 1 coil
Maximum SPL cont/peak	dB 125 / 129	124 / 128	120 / 124	113 / 117	125 / 129
Dispersion	H x V 90° x 60°	90° x 60°	90° x 60°	90° x 90°	90° x 60°
Input impedance	kOhm 22	22	22	22	22
Crossover frequency	kHz 1.8	2	2.5	3.5	1.8
AC Power requirements	VA 400	400	160	75	400
Input connectors	XLR-jack with loop	XLR-jack with loop	XLR-jack with loop	XLR combo with loop	XLR-jack with loop St. RCA, XLR out
Power cord	m / inch 5 / 16.4	5 / 16.4	5 / 16.4	5 / 16.4	5 / 16.4
Net dimensions (WxHxD)	mm 410x663x387 inch 16,14x26,10x15,23	410x663x387 16,14x26,10x15,23	255x415x245 10,03x16,33x9,64	170x275x180 6,69x10,82x7,08	410x663x387 16,14x26,10x15,23
Net weight	kg/lb 14 / 30.86	13.7 / 30.2	8.2 / 18.7	3.4 / 7.49	14 / 30.86
Transport dimensions(WxHxD)	mm 495x740x475 inch 19.48x29.13x18.70	495x740x475 19.48x29.13x18.70	330x480x320 12.99x18.89x12.59	240x345x235 9.44x13.58x9.25	495x740x475 19.48x29.13x18.70
Transport weight	kg/lb 17.1 / 37.69	16.8 / 37.03	9.7 / 21.38	4.2 / 9.25	17.1 / 37.69

Model	J15	J12	J8	J5	J5T
Configuration	way 2	2	2	2	2
Recommended amplifier	W rms 300	300	160	80	50(70/100V)
Long term power	W 150	150	80	40	25
Short term power IEC 268-5	W 600	600	320	160	100
Nominal impedance	Ohm 8	8	8	16	16
Frequency response	@-6dB 50Hz - 20KHz	55Hz - 20KHz	65Hz - 20KHz	90Hz - 20KHz	90Hz - 20KHz
Low frequency woofer	inch 15 - 2 coil	12 - 2 coil	8 - 1.7 coil	5 - 1 coil	5 - 1 coil
High frequency driver	inch 1 - 1 coil	1 - 1 coil	1 - 1 coil	1 dome - 0.75coil	1 dome - 0.75 coil
Sensitivity (@1W/1m)	dB 99	98	96.5	94	91
Maximum SPL cont/peak (Bi-Amp)	dB 124 / 127	123 / 127	118.5 / 121.5	114 / 117	111 / 114
Dispersion	H x V 90° x 60°	90° x 60°	90° x 60°	90° x 90°	90° x 90°
Crossover frequency	kHz 1.8	2	2.5	3.5	3.5
Recommended HP filter	40hz - 24dboct	45hz - 24dboct	55hz - 24dboct	80hz - 24dboct	80hz - 24dboct
Input connectors	2 x Speakon NL4 in & thru	2 x Speakon NL4 in & thru	2 x Speakon NL4 in & thru	1 x jack + terminal strip	terminal strip
Net dimensions (WxHxD)	mm 410x663x387 inch 16,14x26,10x15,23	410x663x387 16,14x26,10x15,23	255x415x245 10,03x16,33x9,64	170x275x180 6,69x10,82x7,08	170x275x180 6,69x10,82x7,08
Net weight	kg/lb 14.7 / 32.4	14.1 / 31.08	6.6 / 14.55	3.4 / 7.49	3.4 / 7.49
Transport dimensions (WxHxD)	mm 495x740x475 inch 19.48x29.13x18.70	495x740x475 19.48x29.13x18.70	330x480x320 12.99x18.89x12.59	240x345x235 9.44x13.58x9.25	240x345x235 9.44x13.58x9.25
Transport weight	kg/lb 17.8 / 39.24	17.2 / 37.91	8.1 / 17.85	4.2 / 9.25	4.2 / 9.25

Accessories page 78	J15a	J12a	J8a	J5a	DJ 15a
Nylon cover	V 38 18614	V 38 18614	V 37 18613	V 36 18612	V 38 18614
Directional wall mount bracket			S-J 8/WHT 18576 Black 39177 White	S-J 5/WHT 18522 Black 38321 White	
Wall metal bracket to mount in horizontal position	BOX 112 18602	BOX 112 18602	S-J 8U/WHT 18568 Black 38464 White	S-J 5U/WHT 18523 Black 38465 White	
Tripod speaker stand				MS 30BK 06076	
Adjustable metal "T" stand for N. 2			SJ-8T 18569	SJ-5T 18527	
Adapter from ø 35mm to ø 25mm			AJ-8 18570	AJ-5 18532	
White metal frame for ceiling/wall installation				SJ-5CW 18526	

SPEAKER | 61
SYSTEMS



X-LITE

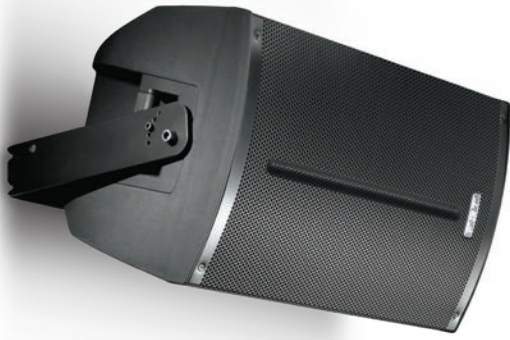
THE X-LITE SERIES IS TRULY VERSATILE AND PROFESSIONAL

The **X-LITE** series has been renewed with the redesign of all the electronics, increasing power and adding important innovations, such as a 3-channel mixer and the use of BLUETOOTH 5.0 for streaming audio from smartphones and tablets, in addition to the use of more efficient speakers capable of generating a higher sound pressure.

The "power unit" is also new featuring a switching power supply with automatic voltage switch in the 100-240Vac range; two high-efficiency Class D channels, a three-channel mixer with two micro/line inputs, a stereo input and channel for wireless audio streaming with BLUETOOTH 5.0 protocol (compatible with previous versions) that allows the simultaneous recognition of two speakers with the possibility of remote volume control.

The introduction of fan with smart control of the number of revolutions allows amplifier operating temperatures to be kept low, ensuring noise-free operation.





Integrated handles, **M10 rigging points** for suspended installation, 35mm stand socket and monitor taper, all included to make the speaker adaptable to any application



Your music, your performance or your installation can count on FBT's new X-LITE series of portable powered speaker systems.

Common features:

- Polypropylene cabinet with gas injection moulding designed to eliminate unwanted resonance.
- High-efficiency custom FBT speakers with high linear excursion capacity.
- Compression drivers with 25mm aperture and 35mm coil.
- 1200W LF and 300W HF high dynamic
- Class D amplifier.
- Universal switching power supply 100-240Vac.
- Bluetooth 5.0
- DSP processor with 4 equalization presets.
- Advanced filtering algorithms, dynamic equalization of low frequencies, energy control that change depending on the preset chosen.
- 3-channel mixer: one dedicated BLUETOOTH 5.0 channel, two independent micro/line channels with separate volume and one with stereo jack input, balanced XLR MIX output or CH1 LINK.
- Built-in handles, M10 anchor points for suspended installation, stand support, 30° and 45° diffuser monitor profile.



Monitor 30°



Monitor 45°



X-LITE 115A

Processed Active Speaker
1200W + 300W

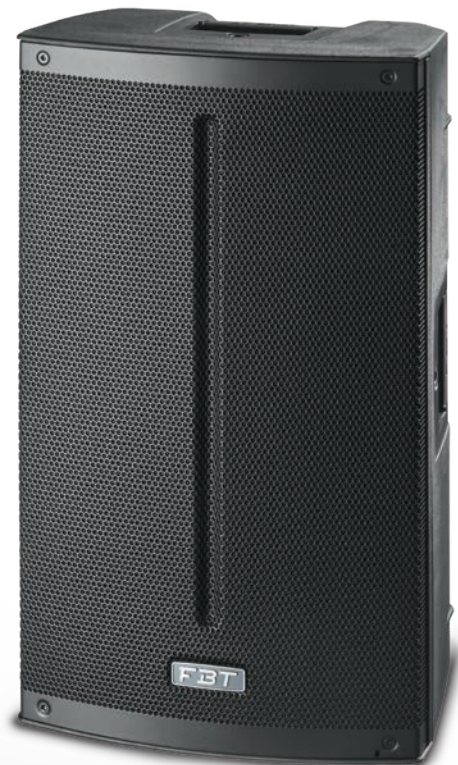
- 2 way bi-amplified bass reflex
- FBT custom 380mm (15") LF woofer with 64mm (2.5") voice coil
- FBT 25mm (1") throat 135mm (1.4") voice coil HF compression driver
- 90°H x 60 °V constant directivity horn



X-LITE 112A

Processed Active Speaker
1200W + 300W

- 2 way bi-amplified bass reflex
- FBT custom 320mm (12") LF woofer with 64mm (2,5") voice coil
- FBT 25mm (1") throat 135mm (1.4") voice coil HF compression driver
- 90°H x 60°V constant directivity horn



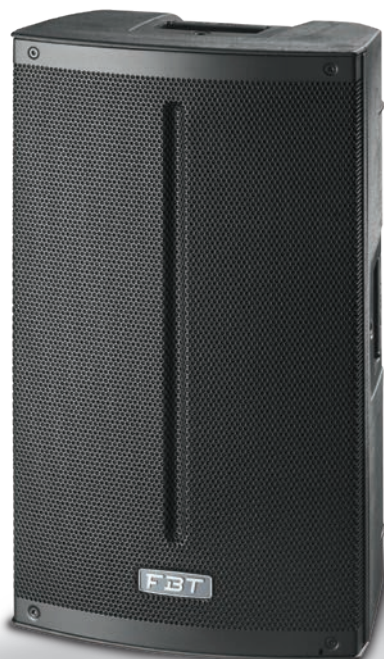


X-LITE 110A

Processed Active Speaker
1200W + 300W

- 2 way bi-amplified bass reflex
- FBT custom 250mm (10") LF woofer with 64mm (2,5") voice coil
- FBT 25mm (1") throat 135mm (1.4") voice coil HF compression driver
- 90 °H x 60 °V constant directivity horn

X-LITE
Speaker Systems





Model		X-LITE 115A	X-LITE 112A	X-LITE 110A
Configuration	way	2	2	2
Built-in amplifier max LF/HF	W	1200/300	1200/300	1200/300
Frequency response	@-6dB	42Hz - 20KHz	50Hz - 20KHz	58Hz - 20KHz
Low frequency woofer	inch	15 - 2.5 coil	12 - 2.5 coil	10 - 2.5 coil
High frequency woofer	inch	1 - 1.4 coil	1 - 1.4 coil	1 - 1.4 coil
Max SPL cont/peak	dB	125 / 130	124 / 129	123 / 127
Dispersion	H x V	90° x 60°	90° x 60°	90° x 60°
Input impedance	kOhm	22	22	22
AC Power requirement	VA	500	500	500
Input connectors		XLR IN / OUT, Jack ST	XLR IN / OUT, Jack ST	XLR IN / OUT, Jack ST
Power cord	m	5	5	5
	ft	16.4	16.4	16.4
Net dimensions (WxHxD)	mm	433x706,5x400	356x619x357	300x536x301,5
	inch	17.04x27.81x15.74	14.01x24.37x14.05	11.81x21.10x11.87
Net weight	kg	19,3	16.3	14,8
	lb	42,54	35.93	32,62

Accessories page 78		X-LITE 115A	X-LITE 112A	X-LITE 110A
Nylon cover		XL-C 15 39489	XL-C 12 39490	XL-C 10 39491
U bracket horizontal wall mount		XL-UH 15 38891	XL-UH 12 38890	XL-UH 10 38889
U bracket vertical wall mount		XL-UV 15 38904	XL-UV 12 38903	XL-UV 10 38902

INTEGRATED | 67
SOUND
SYSTEMS

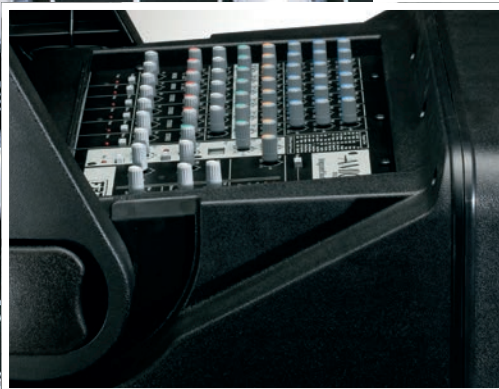


Amico



INTEGRATED SOUND SYSTEM AMICO 10USB

AMICO 10USB is a completely integrated, ready-wired sound system offering a convenient plug and play solution for Houses of Worship, schools, conference halls, DJ sets, sports centers and small musical groups performing live in small to medium sized venues. The mixer, amplification and subwoofer are contained in a single ultra lightweight, yet extremely sturdy polypropylene enclosure. A storage compartment in the rear of the AMICO 10USB houses the two 2- way satellite speakers, allowing the wheeled system to be transported as a one piece unit. AMICO 10USB offers a professional mixing input channels with built-in class D power amplifiers and switch mode power supply. The system is powered by AC mains.



- Analog audio processor with 24dB/oct electronic crossover network and **ADAP** (Advanced Dynamic Active Protection) for total protection of the components
- **3 Class D power amplifiers** with switch mode power supplies to power the subwoofer and the two satellite speakers
- Built-in mixing console with 6 x XLR mic inputs with phantom power supply, 2 x mono inputs and 4 x stereo input channels, 3-band EQ, **99 selectable digital effects** with effects send and return controls
- **USB** input/output to play back music programs/ files from a computer or to record from the master audio output of the AMICO 10 USB to a computer-recording program
- **A quick and easy set-up:** complete system setup in less than 5 minutes! Just connect the satellite speakers to the AMICO 10USB amplifier outputs using the optional Speakon speaker cables and connect the AC power cable to an AC wall outlet
- Multi-function knobs to block, unblock, and remove the cover/ lid transport handle
- **Removable back panel** for access to the satellite speakers' storage compartment. The back panel protects the satellite speakers and keeps them secure when transporting the complete system





Amico 10USB

Processed Active Sound System
500W+2x150W RMS - 130dB total SPL

- **3-way, tri-amplified Bass-Reflex system**
- **14 channel mixer with 99 presets digital multieffect** and phantom power
- **USB** connection for music programs in play and record
- USB input/output to play back music programs/ files from a computer or to record from the master audio output of the AMICO 10USB to a computer - recording program
- **Subwoofer:** 380 mm (15") high efficiency and high excursion custom woofer with a 75 mm (3") voice coil
- **2 x Two way satellite speakers:** featuring 165 mm (6.5") woofers with 38 mm (1.5") voice coils, and a 25 mm (1") compression driver coupled to a 90°H x 60°V constant directivity horn
- **500W RMS Class D amplifier** for subwoofer
- **2 x 150W RMS Class D amplifier** for the satellite speakers
- **Switch mode power supply**



Amico
 Integrated Sound Systems



Model		AMICO 10 USB		
Configuration		3 WAY / SUB+2SAT		
Internal Amplifiers		W RMS	500 + 2x150	
MIXER		channels	2mono+4stereo	
MONO CHANNELS	MICRO	Quantity and type	2 x XLR F	
		Impedance	kohm 2.2	
		Max input signal	dBu 0	
		Max gain	dB 75	
		Equivalent input noise	dB -128	
		CMRR (@ main out, gain 75dB)	dB -80	
	LINE	Quantity and type	2 x JACK balanced	
		Impedance	kohm 33	
		Max input signal	dBu 30	
		Max gain (@ main out)	dB 40	
		TONE	High Shelving (@ 12kHz)	dB ±15
			Medium Peaking (@ 2.5kHz)	dB ±12
Low Shelving (@ 80Hz)	dB ±15			
STEREO CHANNELS	MICRO	Quantity and type	4 x XLR F	
		Impedance	kohm 22	
		Max input signal	dBu 0	
		Max gain	dB 75	
		Equivalent input noise	dB -128	
		CMRR (@ main out, gain 75dB)	dB -80	
	LINE	Quantity and type	8 x JACK balanced	
		Impedance	kohm 22	
		Max input signal	dBu 30	
		Max gain (@ main out)	dB 18	
		TONE	High Shelving (@ 12kHz)	dB ±15
			Medium Peaking (@ 2.5kHz)	dB ±12
Low Shelving (@ 80Hz)	dB ±15			
OUTPUTS	Impedance	ohms 600		
	Mx output (Monitor, Eff, Tape In)	dBu 22		
	Distortion + Noise @ 16	dBu 0.025%		
	Signal/Noise ratio	dB 96		
	Frequency response (@ 0 / -1dB)	20Hz-20kHz		
BUILD-IN EFFECT	Sample frequency	kHz 48		
	Frequency response	20Hz-20kHz		

SUB / COMBO			
Configuration	Way	1	
Internal amplifier	W RMS	500WSUB+2x150WSAT	
Frequency response	@-6dB	40Hz-120Hz	
Sensitivity (@1W, 1m)	dB	97	
Maximum SPL (cont-peak)	dB	124/130	
Dispersion	O x V	omnidirectional	
Low frequency woofer	inch	1x15	
High frequency driver	inch	-	
SAT output connectors		2 x SPEAKON	
SAT			
Internal amplifier / Recommended	W RMS	150	
Impedance	ohms	4	
Frequency response	-6dB	90Hz-20kHz	
Sensitivity (@1W, 1m)	dB	93.5	
Maximum SPL (cont-peak)	dB	115/125	
Dispersion	O x V	90° x 60°	
Low frequency woofer	inch	1x6.5	
High frequency driver	inch	1x1	
Input connectors		1 x SPEAKON	
Power supply cable	m / inch	5/197	
GENERAL SPECIFICATIONS	Net dimensions (WxHxD)	mm 478x780x433	
		inch 18.8x30.7x17	
	Net weight	Kg / Lb	45 / 99.20
	Transport dimensions (WxHxD)	mm 570x880x570	
		inch 22.4x36.5x22.4	
	Transport weight	Kg / Lb	49 / 108.02
Optional accessories		Carrying cover, twin cables, 2 aluminium stands	

V44

Code 23373
Nylon cover

**Amico Kit**

Code 20698
Optional carrying bag, speaker stands, speakon-speakon cables



TOUR TOUGH BUILT, SLEEK DESIGN, IMPRESSIVE SPECS, EXCELLENT COST PER WATT PERFORMANCE, EFFICIENT UNDER ANY APPLICATION

With these credentials, FBT proudly presents the new **AX series of power amplifiers**, the perfect power mates for sound reinforcement speaker systems. The **AX series** consists in four 2HU rack mount models, **from 800 to 3000 watts**, all designed with sophisticated power amp circuits for improved quality, stability and reliability, all equipped with Stereo-Parallel-Bridge operation mode, dB sensitivity switch (26-29-32dB), limiter, ground

lift, XLR/Jack inputs (plus extra RCA input on AX 800), Speakon/Binding posts outputs.

APPLICATIONS

Amplification for live sound reinforcement speaker systems in clubs, discos, piano bar, conference halls, houses of worship, sports arenas, schools, theatres, mobile D.J. use, recording studio monitors, foreground music reproduction, etc.



Model		AX 800	AX 1200	AX 2000	AX 3000
Both channels driven Stereo Continuous 8ohm /Impulsive	1%THD Wrms	230/250	340/350	630/650	880/650
Both channels driven Stereo Continuous 4ohm /Impulsive	1%THD Wrms	350/400	460/600	840/1000	1300/1500
Bridge 8ohm Continuous / Impulsive	W RMS	700/800	920/1200	1680/2000	2600/3000
Frequency Response	@-1dB	20Hz-40kHz	20Hz-40kHz	20Hz-40kHz	20Hz-40kHz
Class	W	AB	H - 2 step	H - 2 step	H - 2 step
Signal to noise ratio	A weight	>100dB	>100dB	>100dB	>100dB
THD	50% Pmax	< 0,03%	< 0,03%	< 0,03%	< 0,03%
Damping factor		> 400	> 400	> 400	> 230
Input Impedance	ohm	20k balanced	20k balanced	20k balanced	20k balanced
Protections		Short circuit / Thermal	Short circuit / Thermal	Short circuit / Thermal	Short circuit / Thermal
Power Supply		120 or 230 Vac 50/60Hz	120 or 230 Vac 50/60Hz	120 or 230 Vac 50/60Hz	120 or 230 Vac 50/60Hz
Power Consumption		1000 VA	1300 VA	2400 VA	3600 VA
Connectors		IN: XRL/Jack OUT: Speakon/ Binding post	IN: XRL/Jack OUT: Speakon/ Binding post	IN: XRL/Jack OUT: Speakon/ Binding post	IN: XRL/Jack OUT: Speakon
Dimensions (WxHxD)	mm inch	482x88x290 19x3.5x11.4	482x88x290 19x3.5x11.4	482x88x290 19x3.5x11.4	482x88x290 19x3.5x11.4

DMM 8008

Digital Matrix

72

The **DMM 8008** is a high performance 8 input x 8 output digital matrix mixer; Specially designed for commercial and professional application such as Conference rooms, Auditoriums, Sport utility buildings, House of worship, Pubs and Disco. It includes 8 independently switchable Line/ Mic inputs with Phantom power supply, 8 Line outputs, managed by a powerful 48kHz 24 Bit DSP engine, in addition to high performance 24 Bit AD/DA converters. The **DMM 8008** supports a full matrix mixing mode where inputs may be routed/mixed in any ratio to any output. Each Mic/Line input channel provides Lo/Hi pass 1st order filters, 3-band parametric EQ, Noise Gate function and Gain control. In addition Mic inputs include a Feedback Eliminator function, based on a powerful «Pitch Shifting» algorithm,

particularly suitable for voice applications. Automixing function automatically adjusts input level to make operating easier using either NOM (Number of Open Mics) attenuation function or Gain sharing algorithm. In addition Ducking process enforces a «priority order» of open microphones in order that high-priority inputs attenuate lower-priority inputs. Each output offers up to 5-band of parametric equalization, crossover filters, RMS compressor, Peak limiter, Phase and Delay controls; 8 digital In/Out ports are provided for general purpose (preset recall, trigger third parts or device); 8 front knobs provides a quickly way to control input Gain; Up to 32 units can be managed by software applications.



2 AVAILABLE MODE TO MANAGE THE DMM 8008



Via RS 485 / TCP-IP / USB

PC software for system design and real time control.



Via RS 485

Optional Wall Control Panel WP 8008 configurable for global or single zone control.

DMM 8008

- Excellent audio performance with 24 bit converters coupled with 48kHz sample rate
- 8 Mic/Line inputs, 8 outputs with full matrix mixing, 3 band parametric equalization and Low/High pass filters per input channel
- 5 band parametric equalization per output channel; each band can be switched to peaking, Low/High shelving with variable Q response
- Crossover filters with slopes from 6dB/Octave up to 24dB/Octave including Butterworth, Bessel, Linkwitz-Riley
- Gain control, Noise Gate, Feedback eliminator (Mic input only) per input channel
- Each output features a precision dynamic range controller composed of a Peak Limiter and a RMS Compressor with selectable ratio and variable knee
- Automixing functions include: Configurable NOM attenuation, Gain sharing algorithm, Priority Ducking
- Adjustable Delay time up to 380mS per output channel
- Front panel interactive LCD display for local access and configuration
- Front panel 6-led status indicators per In/Out channel
- 8 front knobs available for Mic input Gain control
- 4 input contacts for additional 4 preset selections with priority configuration
- 4 digital output ports for triggering external devices
- Simultaneous control up to 32 units via PC software
- Security lockout
- TCP/IP, RS 485 and USB connection for remote controls

	DMM 8008
AUDIO	
Analog Output	8 electronically balanced (Mic - Line - Unbalanced)
Uscite Analogiche	8 electronically balanced
Maximum Input Level	Line: +14dBu; Mic: -20/0dBu (+6dBu unbalanced)
Mic Input Gain	34dB (22dB analog, 12dB digital)
Maximum Output Level	+14dBu
THD+N	0.005% at 1kHz 0dBu
S/N	>104dBA
Frequency Response	20Hz-20kHz +/-1dB
AD & DA Converters	4 x AK5385B 24bit, 1 x Ak4358 24bit (48kHz)
Phantom Power	48Vdc
DSP & PROCESSING	
DSP Engine	Dream SAM3716, 24bit (data) x 96bit (coeff.)
DSP Resolution	24 x 32 bit for filtering process; 96bits resolution on intermediate computation results
Input Equalization	3-band parametric selected as peaking or Low/High shelving with variable Q per input channel Low/High pass 1st order filter per input channel
Output Equalization	5-band parametric EQ selected as peaking or Low/High shelving with variable Q per output channel
Filter Gain	From -12dBu up to +12dBu by 0.5dBu resolution steps
Center Frequency	Selectable with a 1/24th of octave resolution step from 20Hz up to 20kHz
Filter Q/BW	Q from 0.4 up to 10 by 0.1 resolution steps
Crossover Section HPF/LPF	Butterworth 6/12/18/24dB per octave Bussel, Linkwitz-Riley and custom 12/24dB per octave Filter resolution 1/24th of octave
RMS Compressor and Peak Limiter	Threshold from 14dBu up to -34dBu Attack time from 5ms up to 200ms (1ms resolution up to 20ms, 10ms resolution up to 100ms and 20ms resolution up to 200ms) Release time from 0.1 sec up to 3 sec (0.1 sec resolution) Ratio from 1:1 to 32:1 (compressor only) Adjustable soft or hard knee (compressor only)
Delay	380,998 ms 21 us increment/decrement steps per output channel only
Feedback Eliminator	Pitch shifting algorithm only for Mic input channels
Automixing Functions	NOM attenuation, Gain sharing algorithm and priority ducking processing
GENERAL	
Device Presets	6 user presets + 4 by using S1-S4 digital input ports
Front Panel	2 x 24 character LCD display with white/blue LED backlight 6-LED status indicators (Line, Mic, Mute I/O, Signal, Clip, Limiter) 1-LED indicator Phantom power 6 x front push button (Preset recall, Setup) USB type B connector
Rear Panel	2 x 12 pin Phoenix connector (Mic/Line inputs) 2 x 12 pin Phoenix connector (Line outputs) 2 x 4 pin Phoenix connector (S1-S4 digital input ports - TTL level 0-5V) 2 x 4 pin Phoenix connector (S1-S4 digital output ports - TTL level 0-5V) 2 x RJ45 for RS485 In/Out connection 1 x RJ45 with activity leds for Ethernet connection (10/100 TCP-IP) IEC C13 16A connector; power on/off switch
Optional Device	FBT WP8008 wall panel control
Included Software	PC users interface
Main AC	90-240Vac (50/60Hz) - 40W
Dimensions	19" x 1.75" x 9" (483 x 44 x 229mm) - 1RU
Weight, Net/Shipping	7.71lbs (3.5kg) / 8.82lbs (4kg)

DLM26

Digital Loudspeaker Management

74

DIGITAL LOUDSPEAKER MANAGEMENT

The DLM26 is a DSP based 2 input x 6 output Digital Loudspeaker management processor, ideally suited for fixed installations and live events. It combines the functions of a multitude of conventional products in a compact 1U unit with extensive PC remote control capabilities.

Features superb audio quality with premium hi-end AKM5392 24bit A/D converters and AKM 4396 24bit D/A converters, carefully optimized double precision signal processing coupled with 24bit conversion ensure a dynamic range >110dB. The unit can work in STANDARD MODE or in DCL MODE. The first mode permits to configure the crossover in 2x2 way + SUB, 2x3 way or 6way, the input L, R, L+R are freely assignable to each output.



In DCL mode the unit can be configured in 3ch DCL, 2ch DCL + 2ch standard, 1ch DCL + 4ch standard. DCL mode means double compressor limiter, each DCL channel have a double band limiter and compressor with assignable LO/HI split frequency.

Each input has 5 fully configurable filters, a delay of 288.66ms max in step of 6.8us, gain. Each output has 4 fully configurable filters, a delay of 288.66ms max in step of 6.8us, gain, phase, LO-pass/Hi-pass crossover from 6 to 24db/Oct with standard or custom Q, RMS compressor with soft knee and peak limiter. The 2 input levels are displayed by rows of 6 level LED + 1 clip LED, the 6 output levels are displayed by rows of 5 level LED + 1 clip LED + 1 Limiter LED. The unit has 2 analog inputs, a stereo digital SPDIF input, and 6 analog outputs. Linking functions between inputs and linking functions between outputs are available.

The Pc SW for the remote control via RS485 or USB is allowing to connect in net up to 32 units and is allowing to control full parameters of the processor, to show the phase of the filter setting and to adjust graphically the RMS compressor and the Peak limiter. The comprehensive standard specification also include up to 64 memories with security lockout and two password level settings.

DLM26

Digital Loudspeaker Management

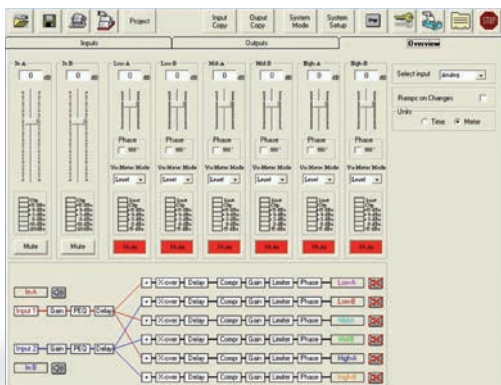
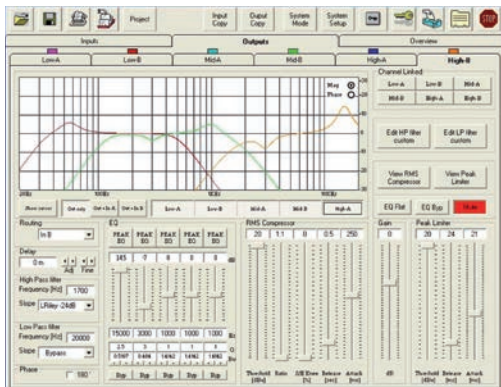


Rear panel

Special features:

- Hi-pass/Lo-pass/Shelving custom Q second order filters
- RMS compressor and PEAK limiter on each output channel with time constant and algorithm optimized for speaker thermal and mechanical protection while maximizing the output with no audible distortion
- Input channel L, R or L + R freely assignable to each output channel
- Double Compressor Limiter Mode (DCL) with two band RMS compressor and Peak limiter with adjustable HP / LP split frequency and separate parameter adj.
This is an exclusive and very useful feature in general purpose digital processors
- ALL PASS first and second order filters useful for Cardioid SUB configurations, very precise phase crossover alignment, special pattern control array, alignment between different speakers and systems

PC software screenshots



Inputs / Outputs	XLR balanced +20dbu max level
Total memories	64
THD+N	0.001% at 1kHz 0dBu
S/N	>110dB
Frequency Response	20Hz - 20kHz @ -0.5db
A/D and D/A Resolution	24bits

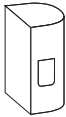
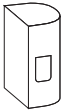
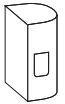
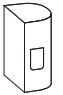
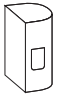
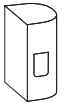
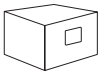
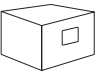
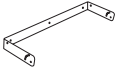
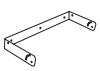
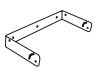
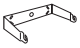
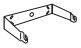
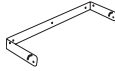
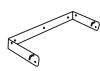
Filters (5 each in/out)	
Type	Peaking EQ, Hi-Shelv 1/2/Q, Lo-Shelv 1/2/Q, HPF 1/2/Q, LPF 1/2/Q, All Pass 1/2, Band pass, Notch
Orders	symmetrical Bell or High/Low Shelving up to second order
Filter gain	-15dBu / +15dBu by 0.5dBu resolution steps
Centre frequency	selectable with a 1/24th of octave resolution steps 20Hz / 20kHz
Filter Q/BW	Q from 0.05 up to 3 by 0.05 resolution steps

Compressors	
Threshold:	-10 / 20dbu
Ratio:	1:1 / 32:1
Soft Knee:	0 / 100%
Attack Time:	10ms / 4s
Release Time:	0.1 / 3s

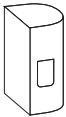
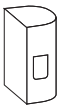
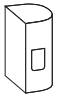
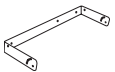
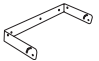

Limiters	
Threshold:	-10 / +20dbu
Attack time:	2ms / 50ms
Release Time:	20ms / 200ms
High pass and Low Pass Filters	From 1st order (Butterworth -6dB/Oct) up to 4th Order (Butterworth, Linkwitz or Bessel -24dB/Oct), Custom Q
Filter's setting step:	1/24th of octave
Maximum Delay:	288.66ms by 6.8us increment/decrement step, on each Input and Output channel

Net Dimensions (WxHxD)	mm	480 x 40 x 220 - 19"	(1U rack)
	inch	18.8x1.5x8 - 19"	(1U rack)
Net Weight:	Kg	2.8	
	Lb	6.1	
Transport Dimensions (WxHxD)	mm	530x100x310	
	inch	20.8x3.9x12.2	
Transport Weight	Kg	3.9	
	Lb	8.6	
Voltage		90 - 240Vac	50/60Hz
Power		30VA	

Ventis

Nylon cover	VN-C 115 40720 Ventis 115	VN-C 112 40721 Ventis 112	VN-C 110 40722 Ventis 110	VN-C 108A 41204 Ventis 108A	VN-C 108 41205 Ventis 108	VN-C 206 40723 Ventis 206	VN-C 115M 41207 Ventis 115M	VN-C 112M 41206 Ventis 112M
								
Wall metal bracket to mount in horizontal position	VN-U 115 40724 Ventis 115	VN-U 112 40725 Ventis 112	VN-U 110 40726 Ventis 110	VN-U 108 41220 Ventis 108	VN-U 206 40727 Ventis 206	VN-U 115M 41296 Ventis 115M	VN-U 112M 41297 Ventis 112M	Directional wall mount bracket AC-W 568/W 36987 Black 37330 White Ventis 108
								



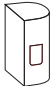
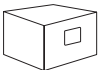


X-PRO

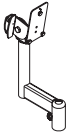
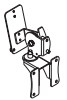


Nylon cover	XP-C 15 39486 X-PRO 115	XP-C 12 39487 X-PRO 112	XP-C 10 39488 X-PRO 110	Wall metal bracket to mount in horizontal position	XP UH 115 38894 X-PRO 115	X-P U 12 38893 X-PRO 112	X-P U 10 38892 X-PRO 110
							

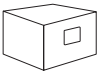


X-SUB







Nylon cover	XS-C 155 41233 X-SUB 115S	XS-CH 155 41234 X-SUB 115S with wheels	Wheels Kit KW-X SUB 38889 X-SUB
			

Vertus

Nylon cover	VT-C 604 36122 Vertus CLA 604	VT-C 114 37145 Vertus VT-SC 114	VT-C 59 37146 Vertus VT-SC 59	VT-C 208 36123 Vertus CLA 208	Pin Lock 4 pezzi	VT-P 604 Kit 36964 Vertus CLA 604	Stand adapter ø 35mm	VT-S 604/W 35723 Black 37044 White Vertus CLA 604
								

Directional stand adapter	VT-DS 604/W 37053 Black 37054 White Vertus CLA 604A	Directional stand adapter	VT-W 604/W 35722 Black 37043 White Vertus CLA 604A	Stand column h 59cm	VT-SC59 604/W 36879 Black 36883 White Vertus CLA 604A	Stand column h 114cm	VT-SC114 604/W 37041 Black 37042 White Vertus CLA 604A
							

Nylon cover	VT-C 1000 41024 Vertus CS 1000	Carrying bag	VT-CB 1000 40730 Vertus CS 1000	Trolley	TR-100 40912 Vertus CS 1000
					

Flying bar	VT-F 1000 40913 Vertus CS 1000	VT-F 1000W 41041 Vertus CS 1000 white	Joint bar	VT-J 1000 40731 Vertus CS 1000	VT-J 1000W 41040 Vertus CS 1000 white	Directional Wall mount	VT-W 1000 40728 Vertus CS 1000	VT-W 1000W 41039 Vertus CS 1000 white
								

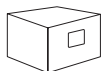
SUBLine

Nylon cover

SL-C 218S
38897
Subline 218SA



SL-CH 218S
38898
Subline 218SA with wheels



SL-C 118
41225
Subline 118



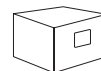
SL-CH 118
41226
Subline 118 with wheels



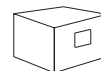
SL-C 115
41227
Subline 215



SL-CH 115
41228
Subline 215 with wheels



SL-C 112
41229
Subline 112



4 wheels kit 2 with brake 80 mm

KW-HM 80
30423
Subline 115SA



4 wheels kit 2 with brake 100 mm

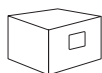
KBW-1004S
25197
Subline 118S/SA
Subline 218SA



StageMaxX

Nylon cover

SM-C 12
36065
StageMaxX 12MA



Wall metal bracket to mount in horizontal position

SM-U 12 W
36066 Black
36735 White
StageMaxX 12MA



Metal bracket with top-hat speaker stand socket

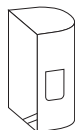
SM-S 12M
37099
StageMaxX 12MA



HiMaxX

Nylon cover

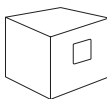
V 33
15777
HiMaxX 60



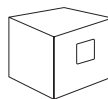
V 29
10186
HiMaxX 40



V 56
29486
HiMaxX 100SA

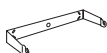


HM-CH 100S
37049
Subline 100SA with wheels



Wall metal bracket to mount in horizontal position

BOX 104
15771
HiMaxX 60



BOX 100
10187
HiMaxX 40



Wall metal bracket to mount in vertical position

BOX 105
15772
HiMaxX 60



BOX 101
10188
HiMaxX 40



4 wheels kit 2 with brake 80 mm

KW-HM 80
30423
HiMaxX 100SA



ProMaxX

Nylon cover

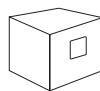
V 64
33326
ProMaxX 114
ProMaxX 112



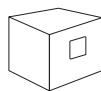
V 63
33325
ProMaxX 110



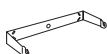
V 65
33327
ProMaxX 15 SA



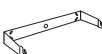
PM-CH 15S
37050
ProMaxX 15 SA con ruote



BOX 128
33329
ProMaxX 114
ProMaxX 112



BOX 127
33328
ProMaxX 110

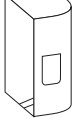
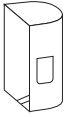


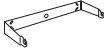
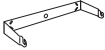
4 wheels kit 2 with brake 80 mm

KW-HM 80
30423
ProMaxX 15 SA

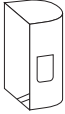
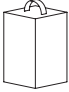



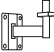

JMaxX

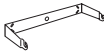


Nylon cover	V 64 33326 JMaxX 114 JMaxX 112	V 63 33325 JMaxX 110
		

Wall metal bracket to mount in horizontal position	BOX 128 33329 JMaxX 114 JMaxX 112	BOX 127 33328 JMaxX 110
		

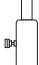

J

Nylon cover	V 38 18614 J 15 J 12 DJ 15	V 37 18613 J 8	V 36 18612 2x J 5
			

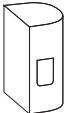
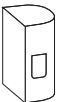
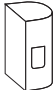
Directional wall mount bracket	SJ-8 SJ-8 WHT 18567 Black 39177 White J 8	SJ-5 SJ-5 WHT 18522 Black 38321 White J 5
		

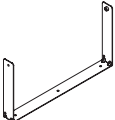
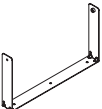
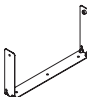
Wall metal bracket to mount in horizontal position	BOX 112 18602 J 15 J 12	SJ-8U SJ-8U WHT 18568 Black 38464 White J 8	SJ-5U SJ-5U WHT 18523 Black 38465 White J 5
			

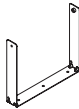
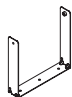
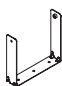
Adjustable metal T stand for No. 2	SJ-8T 18569 Black J 8	SJ-5T 18527 Black J 5
		

Adapter 35mm	AJ-8 18570 Black J 8	AJ-5 18532 Black J 5	Metal frame for ceiling/wall installation SJ-5C W 18526 White J 5
			

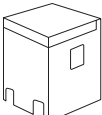
X-LITE

Nylon cover	XL-C 15 39489 X-LITE 15	XL-C 12 39490 X-LITE 12	XL-C 10 39491 X-LITE 11
			

Wall metal bracket to mount in horizontal position	XL-UH 15 38891 X-LITE 115	XL-UH 12 38890 X-LITE 112	XL-UH 10 38889 X-LITE 110
			

Wall metal bracket to mount in horizontal position	XL-UV 15 38904 X-LITE 115	XL-UV 12 38903 X-LITE 112	XL-UV 10 38902 X-LITE 110
			

AMICO

Nylon cover	V 44 23373 Amico 10 USB
	

ACCESSORIES AVAILABLE FOR ALL PRODUCTS

Wall mount heavy-duty steel speaker bracket



Tripod speaker stand



Microphone stand



Telescopic speaker pole



Speaker stand bag



PROFESSIONAL CABLES

**NC3FXX
NC3MXX**



Balanced Signal Cables

XMF-05
39728
Lenght 0.5mt

XMF-01
39729
Lenght 1mt

XMF-02
39730
Lenght 2mt

XMF-03
39731
Lenght 3mt

XMF-06
39732
Lenght 6mt

XMF-10
39733
Lenght 10mt

XMF-15
39734
Lenght 15mt

XMF-20
39735
Lenght 20mt

XMF-30
39736
Lenght 30mt



**PowerCON
TRUE1
NAC3MX
NAC3FX**



PMF-05
39409
Lenght 0.5mt

PMF-1
39408
Lenght 1mt

PMF-2
37893
Lenght 2mt

PMF-2
40464
Lenght 15mt



**PowerCON
TRUE1
NAC3MX
NAC3FX
(UL series)**



PMF-05 UL
39651
Lenght 0.5mt

PMF-1 UL
39652
Lenght 1mt

PMF-2 UL
39653
Lenght 2mt



**PowerCON
NAC3FCA
NAC3FCB**



PAB-025 UL
39658
Lenght 0.25mt

PAB-05 UL
39657
Lenght 0.5mt

PAB-1 UL
36642
Lenght 1mt

PAB-2 UL
37303
Lenght 2mt



**PowerCON
NAC3FCA
NAC3FCB
(UL series)**



PAB-025
36645
Lenght 0.25mt

PAB-05
36644
Lenght 0.5mt

PAB-1
36643
Lenght 1mt

PAB-2
37892
Lenght 2mt



**SpeakON
NL4FX**



SP4-025
39754
Lenght 0.25mt

SP4-05
39755
Lenght 0.5mt

SP4-2
39756
Lenght 2mt

SP4-10
39757
Lenght 10mt

SP4-20
39758
Lenght 20mt



NL4MMX

Lockable 4 pole speakON adapter
39772



FBT Elettronica SpA
has the right to amend products
and specifications without notice.

ALPS™, B&C and Neutrik™ are the trademarks
of their respective owners.

Graphics
Studio Conti

Photography
Giuseppe Saluzzi

Printing
Tecnostampa - Pigni Group Printing Division
Loreto - Trevi

Date of printing: May 2022

FBT.P.S.22/23.0.UK